

Community Conservation Partnerships Program 2024 (Round 30) Overview Endless Mountains Heritage Region March 29, 2024



DCNR Grants

Community Conservation Partnerships Program



Allen Park Playground Construction

Need funding for your recreation or conservation project? A grant from DCNR's Community Conservation Partnerships Program (C2P2) may be able to help.

Eligible applicants include:

- County and municipal governments
- Municipal authorities
- Non-profit organizations
- Pre-qualified land trusts
- State-designated heritage areas
- For-profit businesses (limited options)



Great Allegheny Passage



Litz Springs Pool Splashpad

Grants are available for:

- Park Rehabilitation and Development
- Land Acquisition and Conservation
- Rivers Conservation and Development
- Recreation and Conservation Planning
- Trail Planning and Construction
- Statewide and Regional Partnerships
- ATV and Snowmobile Projects
- Community and Watershed Forestry

To learn more and to apply, visit the DCNR Grants Customer Service Portal at apps.dcnr.pa.gov/grants and contact your **DCNR Regional Advisor**.



Access DCNR Grants Customer Service Portal



View regional advisor map and contact info

pennsylvania
DEPARTMENT OF CONSERVATION AND NATURAL RESOURCES
WWW.DCNR.PA.GOV

BUREAU OF RECREATION AND CONSERVATION MISSION

TO BE A LEADER IN...



Protecting and enhancing the commonwealth's natural and heritage resources



Advancing the greening of Pennsylvania

Providing recreational opportunities for all to enjoy



DCNR Grants

Community Conservation Partnerships Program



Allen Park Playground Construction

Need funding for your recreation or conservation project? A grant from DCNR's Community Conservation Partnerships Program (C2P2) may be able to help.

Eligible applicants include:

- County and municipal governments
- Municipal authorities
- Non-profit organizations
- Pre-qualified land trusts
- State-designated heritage areas
- For-profit businesses (limited options)



Great Allegheny Passage



Litzitz Springs Pool Splashpad

Grants are available for:

- Park Rehabilitation and Development
- Land Acquisition and Conservation
- Rivers Conservation and Development
- Recreation and Conservation Planning
- Trail Planning and Construction
- Statewide and Regional Partnerships
- ATV and Snowmobile Projects
- Community and Watershed Forestry

To learn more and to apply, visit the DCNR Grants Customer Service Portal at apps.dcnr.pa.gov/grants and contact your **DCNR Regional Advisor**.



Access DCNR Grants Customer Service Portal



View regional advisor map and contact info

pennsylvania
DEPARTMENT OF CONSERVATION AND NATURAL RESOURCES
WWW.DCNR.PA.GOV

BUREAU OF RECREATION AND CONSERVATION MISSION

HOW DO WE DO THAT?



Grants and technical assistance

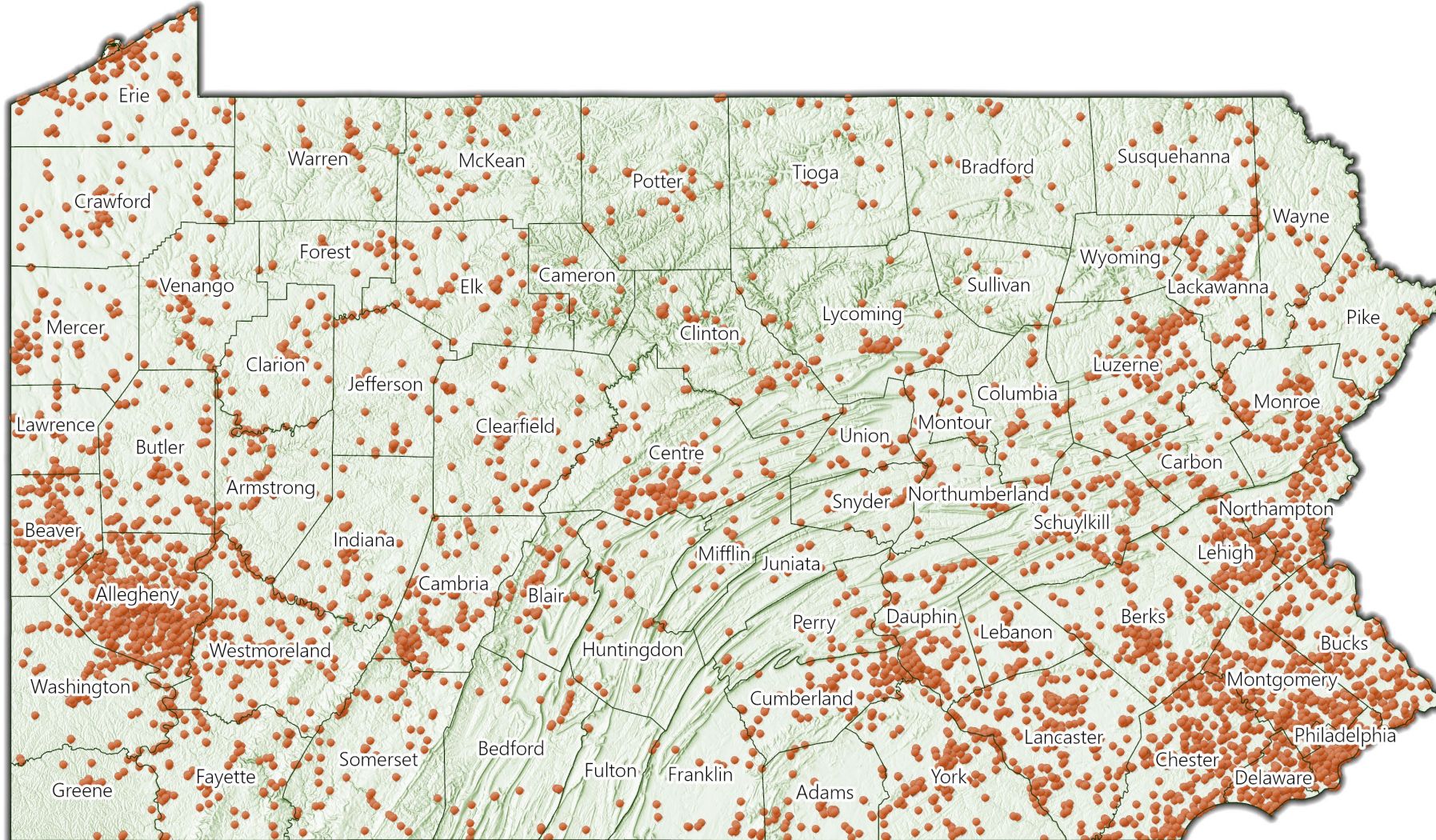






Support for local parks, trails, waterways, open space conservation, and heritage protection



Partnering with YOU!

Grants that Make a Difference



-  **>8,000** projects since 1995
-  **70%** of all PA municipalities have had at least one project in their borders
-  **>90%** of Pennsylvanians live in a municipality with a C2P2 project
-  **40%** of PA local parks have received a C2P2 grant

Grants that Make a Difference

In 2022, DCNR Bureau of Recreation and Conservation funded more than 300 local projects, including:

\$90 million+
funding awarded



36
new parks built



7,000+



acres of land permanently protected for outdoor recreation



106
local parks renovated



27
parks planned



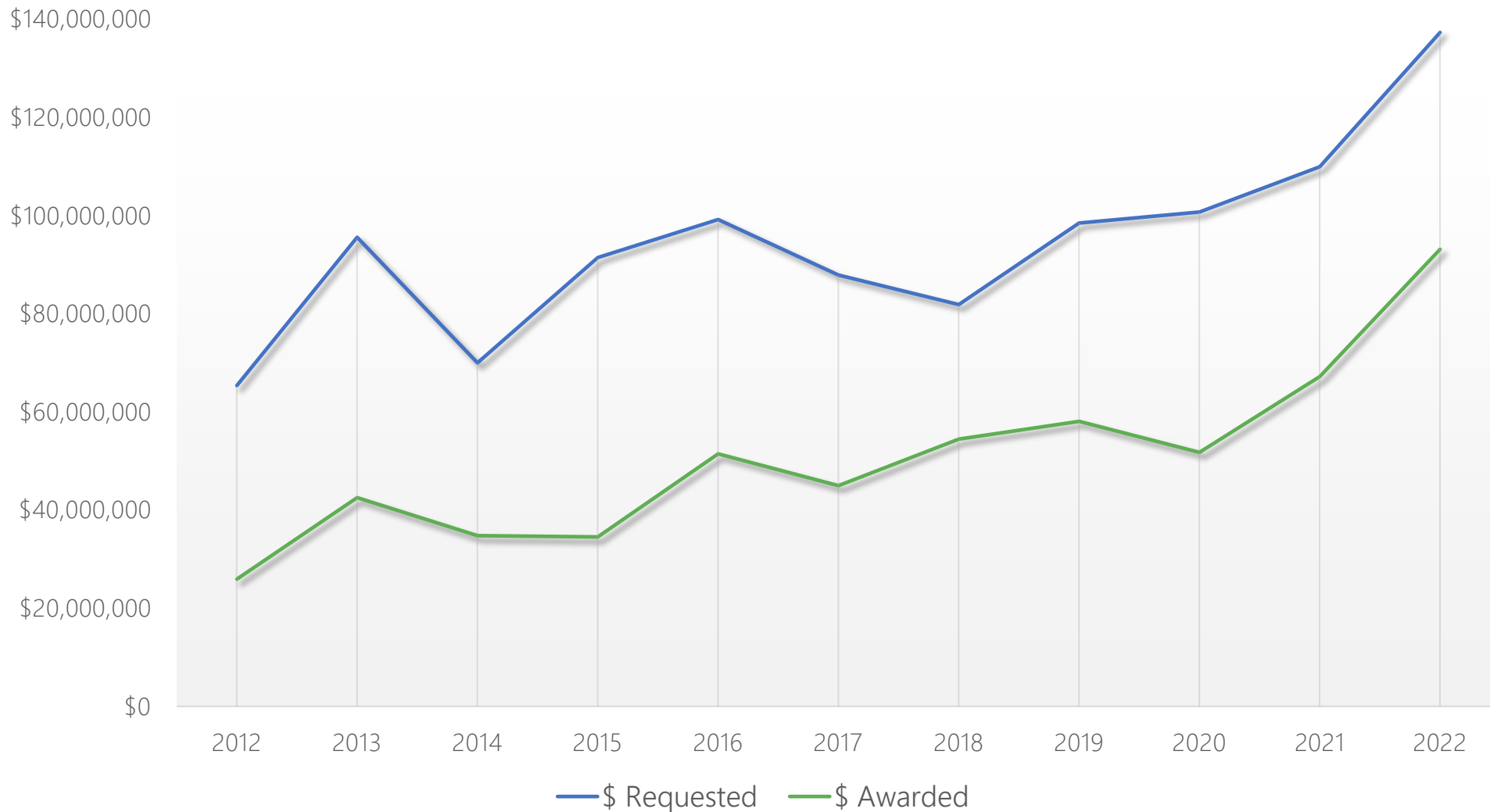
214
acres of streamside forest buffers established


44 
partner organizations supported

Grants that Are in Demand



Annual C2P2 Grant Funds Requested and Awarded over Last Decade



 **110%** increase in annual requested funding since 2012

 Able to fund **53%** of request on average

What We Fund

- ✔ Site development plans, feasibility studies, and comprehensive park and recreation plans
- ✔ Development of new and rehab of existing local park and recreation facilities
- ✔ Land purchases for habitat, recreation, and open space
- ✔ Planning, construction, and rehab of trails
- ✔ Boat launches, fishing access, and stream restoration
- ✔ Community tree planting & riparian forested buffers
- ✔ Statewide and regional education, training, and partnerships

A scenic view of the Northwest Lancaster County River Trail. The foreground shows a paved path curving through a grassy area with a wooden bench and a person walking. In the background, a large stone bridge spans a wide river under a clear blue sky. A large tree stands on the left side of the path.

Northwest Lancaster County River Trail

2024 Priorities

Community Parks & Recreation

- 🌿 Planning and development projects that focus on recreation for all and rehab of existing parks

Land Conservation/Watershed Protection

- 🌿 Protect critical habitat, climate-resilient lands, forested watersheds, and riparian corridors

Watershed Restoration/Rivers Implementation

- 🌿 Enhance public access to PA waterways
- 🌿 Improve PA watersheds
- 🌿 Community tree planting and riparian forest buffers

Trails

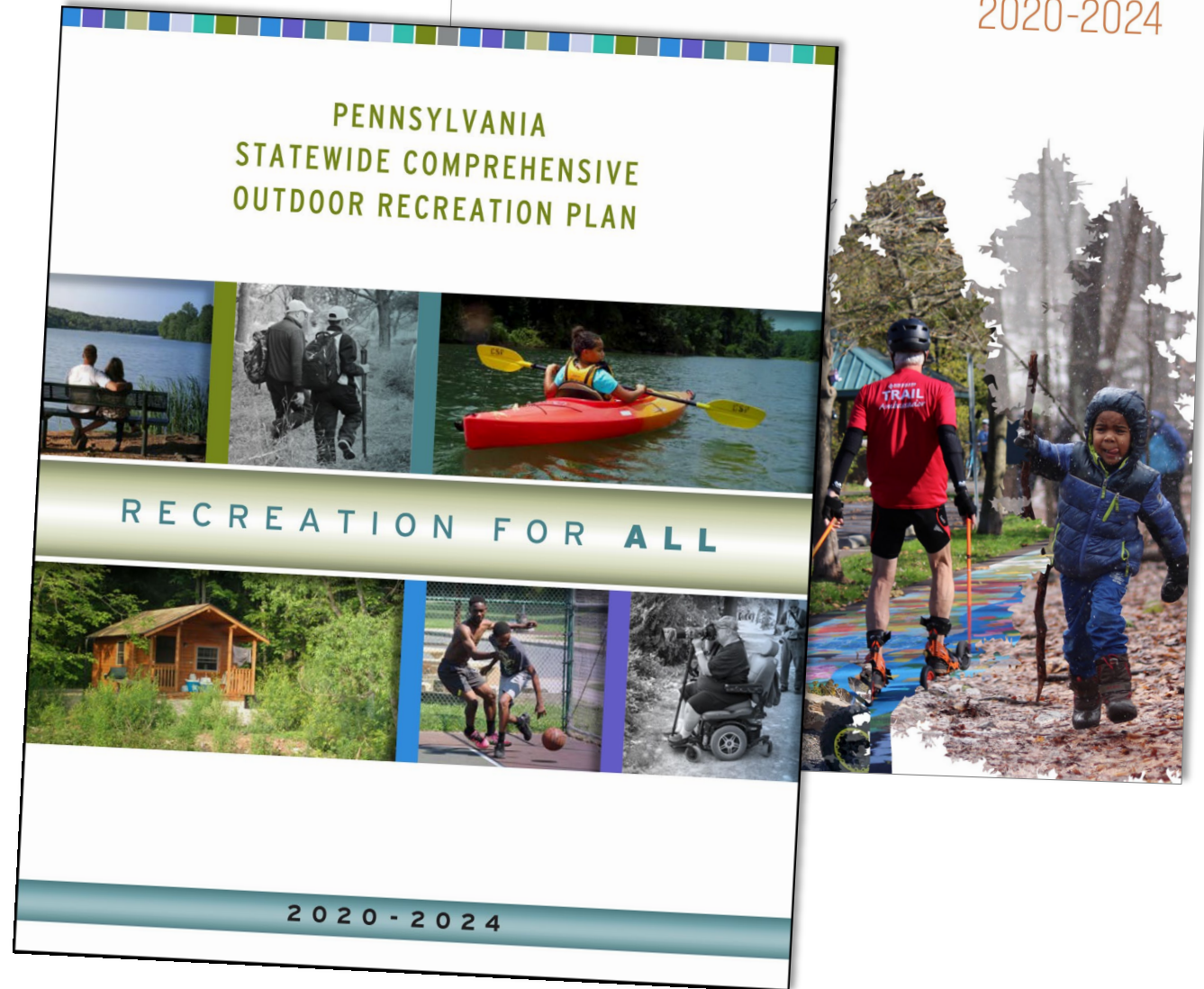
- 🌿 Closing Priority Trail Gaps

Recreation for All

- 🌿 Address a recreation access need in a medium- or high-priority area
- 🌿 Serve an underserved population

Pennsylvania Land and Water Trail Network Strategic Plan

2020-2024



Who We Fund

Municipalities

Municipal Agencies

Non-Profit Organizations

Pre-Qualified Land Trusts

For-Profit Enterprises*

How We Fund



State



Heritage Area and Other Parks Fund

Snowmobile Restricted Account

ATV Restricted Account

Keystone Tree Fund

Federal



Recreational Trails Program

When We Fund



JANUARY 16th, 2024

DCNR Grant Round Opens



2024



APRIL 3rd, 2024

4:00PM

DCNR Grant Round Closes

SPRING/SUMMER 2024

DCNR Reviews & Ranks All Applications



FALL 2024

DCNR Grant Announcement

JANUARY 2025

Typical DCNR Grant Agreements Begin



25

SPRING/SUMMER 2025

Earliest Your Project Will Begin



NOVEMBER 16th, 2023

DCNR Grant Workshop



Match Requirements

- ✔ Funding source legislation typically sets match requirements
- ✔ Most projects require 50/50 Match (\$1 for \$1)
- ✔ Match must be “secure” with letters of commitment at time of application
- ✔ Match is not eligible if spent before grant agreement period



Match Sources

CASH

- 🌿 MOST federal funds
- 🌿 MOST local funds
- 🌿 MOST private funds
- 🌿 SOME state funds

NON-CASH

- 🌿 In-house labor
- 🌿 Equipment use
- 🌿 Donations (goods and services)
- 🌿 Volunteers



