

# ENDLESS MOUNTAINS OUTDOOR *Recreation* GUIDE

Bradford County

Sullivan County

Susquehanna County

Wyoming County



# ENDLESS MOUNTAINS HERITAGE REGION

The Endless Mountains Heritage Region (EMHR) was established in 1998 as a non-profit, membership-based organization within the PA Heritage Areas Program. It is one of 12 current Heritage Areas across the Commonwealth, which is designated by the Department of Conservation and Natural Resources (DCNR). The EMHR proudly serves a 2,850-square mile area encompassing Bradford, Sullivan, Susquehanna, and Wyoming Counties.



The EMHR is committed to historic preservation, outdoor recreation development, educational programming, and the co-management of the Susquehanna River's North Branch Water Trail, a national recreation trail and official gateway to the Chesapeake Bay Gateways Network. After the EMHR successfully nominated the Susquehanna River North Branch as the 2023 PA River of the Year in conjunction with its 25th anniversary, the water trail earned this prestigious designation for a sixth time, more than any other waterway in the Commonwealth.



Known for our unmatched pastoral landscapes shaped by centuries of farming and timbering as well as land conservation, the EMHR embraces its agricultural theme of "Living with the Land," and its mission to "celebrate, preserve, and enhance the unique rural character and cultural of the Endless Mountains." In over 25 years of existence, the EMHR has provided financial and capacity-building support to various partner organizations and dozens of projects to fulfill that mission. Through the years, the EMHR has attained well over \$3 million in state funding that has been brought into the region to perform historical and cultural preservation initiatives, outdoor recreation development and improvement projects, scenic enhancements, and heritage asset promotion. These many initiatives have undoubtedly increased the quality of life for our residents and encourage heritage tourism across the four-county region.



EMHR serves as a regional lead organization of the Susquehanna Greenway Partnership and is involved in various greenway, land conservation, and trail initiatives in the area, as well as scenic byways and vista enhancements.



602 Main St., Suite 7,  
Towanda, PA 18848  
(570) 265-1528  
[EMHeritage.org](http://EMHeritage.org)  
[contact@emheritage.org](mailto:contact@emheritage.org)



**WELCOME** to Pennsylvania's Endless Mountains, a natural playground named by William Penn's cartographers, who upon viewing them for the first time remarked to the state's founders that "the mountains are endless!"

Comprising four contiguous counties along the commonwealth's northern border - Bradford, Sullivan, Susquehanna, and Wyoming - the region is home to majestic mountains, sparkling waterfalls, and untouched parks. With thousands of miles of trails and recreational parks, the region offers outdoor fans countless opportunities and resources to enjoy outdoor activities throughout the year.

This guide provides resources to plan your next adventure, including an inventory of the various locations, activities, and destination resources; maps, visitor information, and other amenities to consider when making your plans. We recommend that as you get closer to your visit, you check out the websites, event calendars, and other up-to-the-minute resources that will keep you current.



We look forward to welcoming you to experience the abundant natural beauty that this part of "Penn's Woods" has to offer. There's no better place in Pennsylvania to spend time in nature than the Endless Mountains!

## TOURISM PROMOTION AGENCY PARTNERS



Bradford County Tourism Promotion Agency  
1 Washington St., Suite B, Towanda, PA 18848   
(570) 265-TOUR VisitBradfordCounty.com bctourism@bradfordco.org



Endless Mountains Visitors Bureau  
5405 State Route 6, Tunkhannock, PA 18657    
1-800-769-8999 or (570) 836-5431  
EndlessMountains.org info@endlessmountains.org



  
**SUSQUEHANNA  
COUNTY**  
PROMOTION & TOURISM AGENCY    
Susquehanna County Promotion & Tourism Agency  
31 Lake Ave., Montrose, PA 18801  
(570) 767-4151 visitsusqco.com tourism@visitsusqco.com

## TABLE OF CONTENTS

State Parks	4
Miller Mountain	7
Trails	8
State Forests	12
Waterways and Waterfalls	14
D&H Rail-Trail	17
Area Map	18
State Game Lands	20
Local Parks and Recreation	22
Camping and Campgrounds	24
A Beginners Guide to the Great Outdoors	26
Endless Mountains Gravel Bikepacking Loop	27
High Octane Adventure	28
Outfitters and Guides	29
Preserves, Birdwatching and Wildlife Sanctuaries	30
Find the Information You Need	32
Elk Mountain Ski Area	34
Be Prepared	35

# STATE PARKS



The Pennsylvania Department of Conservation & Natural Resources' Bureaus of State Parks offers the following description of their work:

*The primary mission of Pennsylvania state parks is to provide opportunities for enjoying healthful outdoor recreation and serve as outdoor classrooms for environmental education. In meeting these purposes, the conservation of the natural, scenic, aesthetic, and historical values of parks should be given first consideration.*

The Endless Mountains are home to five of Pennsylvania's 124 state parks, each of which further that mission through resource maintenance and educational programming. At the state parks, visitors discover not only the natural beauty of the region but also enjoy for no or nominal costs activities ranging from soft to active adventure. No matter your outdoor activity of choice - hiking trails lined with spectacular waterfalls, photographing stunning vistas, sleeping under a quilt of twinkling stars, walking trails aglow with the colors of fall foliage, casting a line into a rocky mountain creek bed or snowshoeing during a gently falling snow - the state parks in the Endless Mountains are filled with opportunities to pursue your favorite pastime!

## *The Endless Mountains' Newest State Park!*

### Wyoming County

### VOSBURG NECK STATE PARK

470 Vosburg Road, Tunkhannock, PA 18657

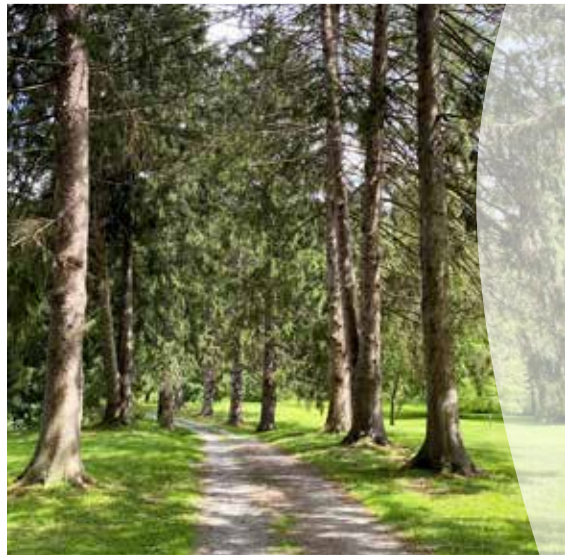
Phone: 570-362-6437

Website: [dcnr.pa.gov/StateParks/  
FindAPark/VosburgNeckStatePark/](https://dcnr.pa.gov/StateParks/FindAPark/VosburgNeckStatePark/)

Email: [vosburgnecksp@pa.gov](mailto:vosburgnecksp@pa.gov)

Vosburg Neck State Park (formerly Howland Preserve) is a 669-acre park along the scenic Susquehanna River. Located just five miles west of Tunkhannock, the property became a state park in 2022, making it one of the newest in the state.

The park is named for Abraham Vosburg, who was given the land in the 1700s after serving in the Revolutionary War. The "Neck" refers to the dramatic oxbow bend where the river curves around the mountains. This geographic wonder creates a stunning setting for boating and fishing. The park's non-motorized boat launch is perfect for kayaks and canoes. The riverbanks are also a prime spot for wildlife watching.



In fact, a pair of nesting bald eagles call Vosburg Neck home.

Eight miles of hiking trails lead through pristine meadows and dense woodlands. The trails range from short, easy walks along the river to moderate, hilly treks like the popular Vista Trail. Along the way, hikers will spot historic features, such as eighteenth- and nineteenth-century buildings, remnants of the old canal system, and a 1700s-era cemetery. The park hosts educational programs every month, including guided hikes and children's programs.

## Bradford County

### MOUNT PISGAH STATE PARK

28 Entrance Road, Troy, PA 16947

Phone: (570) 297-2734

Toll Free: 888-727-2757

Reservations: 888-727-2757

Website: [dcnr.pa.gov/StateParks/  
FindAPark/MountPisgahStatePark/](http://dcnr.pa.gov/StateParks/FindAPark/MountPisgahStatePark/)

Email: [mtpisgahsp@pa.gov](mailto:mtpisgahsp@pa.gov)

Mt. Pisgah State Park, a 1,302-acre state park at the base of Mt. Pisgah (elevation 2,260 feet), offers visitors a wide variety of recreational resources from hiking trails, spaces, and butterfly garden to a 75-acre lake complete with launch, fishing pier and boat rentals in season. Located between Troy and Towanda, the park sits along Mill Creek where a dam forms Stephen Foster Lake, named after the composer and onetime local resident. The 75-acre Stephen Foster Lake offers a boat launch, dock, restrooms, and parking area. Mooring spaces are available for rental. Adjacent to the state park are Mt. Pisgah County Park and State Game Land 289.

Mt. Pisgah is a well-managed location to cast off when fishing season begins and remains popular spot throughout the year (including as an ice fishing destination when conditions safely permit). In summer, the swimming pool is open daily through Labor Day. Swimming is not permitted in the lake. The pool complex offers dressing rooms, showers, concession stand, and lifeguard station. Fall foliage season annually proves a popular time for hikers and recreational visitors to take in the brilliant displays of autumnal color that the park offers.

Educational programs as well as the summer DiscoverE program for kids are offered throughout the year at Mt. Pisgah State Park.



## Sullivan County

### RICKETTS GLEN STATE PARK

695 State Route 487, Benton, PA 17814

Phone: (570) 477-5675

Toll Free: 888-727-2757

Reservations: 888-727-2757

Website: [dcnr.pa.gov/StateParks/  
FindAPark/RickettsGlenStatePark/](http://dcnr.pa.gov/StateParks/FindAPark/RickettsGlenStatePark/)

Email: [rickettsglensp@pa.gov](mailto:rickettsglensp@pa.gov)

Ricketts Glen State Park is regarded as one of the most scenic areas in all of Pennsylvania. The park of 13,193 acres offers unsurpassed recreational resources that draw outdoors enthusiasts from far and wide. Trails ideal for every skill level of hiker are one of the park's most popular draws; the Falls Trail and the Glens feature a series of wild, free-flowing waterfalls, each cascading through rock-strewn clefts carved by nature in the park's ancient hillsides. The 94-foot Ganoga Falls is the highest of 22 named waterfalls that visitors will discover. Ricketts Glen State Park also harbors Glens Natural Area, a National Natural Landmark, dedicated to the preservation of old growth timber and the park's diverse wildlife population.

Lake Jean, a 245-acre recreational body of water, offers dry mooring and one boat launch (electric engines only). A boat rental concession operates during the summer season offering rowboats, paddleboats, kayaks, and canoes while a seasonal beachfront swimming area, picnic area, pavilion and parking lot make the lake a popular vacation destination.

The park offers a wide variety of camping options for visitors to consider - ten modern rental cabins are available for year-round use as well as 120 tent and trailer campsites (some available year-round). The campground features hot showers, flush toilets, shaded sites, gravel parking spurs and a sanitary dump station. Six campsites are ADA accessible.

# STATE PARKS

## Sullivan County

### WORLDS END STATE PARK

82 Cabin Bridge Road, Forksville, PA 18616

Phone: (570) 924-3287

Toll Free: 888-727-2757

Reservations: 888-727-2757

Website: [dcnr.pa.gov/StateParks/  
FindAPark/WorldsEndStatePark/](http://dcnr.pa.gov/StateParks/FindAPark/WorldsEndStatePark/)

Email: [worldsendsp@pa.gov](mailto:worldsendsp@pa.gov)

The 780-acre Worlds End State Park, surrounded by the lush Loyalsock State Forest, is known for its scenic vistas, dense forestation, and photographically magnificent waterways. In June, the park bursts with color when mountain laurel, Pennsylvania's state flower, blooms throughout the park. Likewise, fall foliage brings with it another seasonal display of nature's beauty when the Canyon Vista becomes ablaze with brilliant autumn's colors. The hiking trails offer a wide variety of terrain for enthusiasts to experience depending upon their skill and comfort level.

Nineteen rustic cabins are available for rental throughout the year at Worlds End State Park. A 70-site tent and trailer campground is located along PA 154, one mile east of the park office. Half of the campsites have electric hookups. Water and restrooms are within a short distance of all sites.

A small dam on Loyalsock Creek forms a swimming area that is open from late-May to mid-September, 8 a.m. to sunset. Swimming at the site is at your own risk. The mountain stream water is always cold and exhilarating. A picnic area, outdoor chapel, concessions area and rest facilities are all located within a short distance of the swimming area on the creek.



## Susquehanna County

### SALT SPRINGS STATE PARK

2305 Salt Springs Road, Montrose, PA 18801

Phone: (570) 967-7275

Toll Free: 888-727-2757

Reservations: 888-727-2757

Website: [dcnr.pa.gov/StateParks/  
FindAPark/SaltSpringsStatePark/](http://dcnr.pa.gov/StateParks/FindAPark/SaltSpringsStatePark/)

Email: [lackawannasp@pa.gov](mailto:lackawannasp@pa.gov)

Old growth hemlocks, beautiful trails, and a series of scenic waterfalls along Fall Brook make the 400-acre Salt Springs State Park a popular destination for outdoor activity in Susquehanna County. Created in the 1960's on a tract of land owned by the Wheaton family from 1848, the land was purchased by The Nature Conservancy and subsequently by the Commonwealth. Today, the Friends of Salt Springs State Park actively manage the educational and recreational programs that take place in the park throughout the year. From nature hikes to seasonal celebrations, outdoor enthusiasts will discover a wide variety of activities to consider when planning a visit to the park.

The Hemlock Trail features an accessible walkway that looks over the three waterfalls along Fall Brook Stream making it a popular destination for visitors. A welcome center and parking area offer easy access to the park's picnic area at the base of the mountain. A short walk across the bridge to view the area where the remains of the spring sit offers visitors a perfect spot to spend time surrounded by the natural beauty of Salt Springs State Park.



# Miller Mountain

## IN THE PINCHOT STATE FOREST

**W**hether you're a visitor or local resident, Miller Mountain offers unique opportunities to connect with nature and experience the beauty of all four seasons in the region. As a private mountain land tract, the resources of the mountain have been logged, farmed, logged, and at one point, envisioned as a ski resort. In the Fall of 2023, the Pennsylvania Department of Conservation and Natural Resources (DCNR) announced that Miller Mountain would become part of the publicly held Pinchot State Forest, making it a resource for outdoor enthusiasts and visitors.

As part of the Appalachian Mountain range, with slopes rising over 1,600 feet and an elevation of 2,216 feet, Miller Mountain is a landmark reaching above the town of Tunkhannock. With the Susquehanna River flowing past the base of the mountain, the property makes it a perfect location for "soft adventure" activities like walking, hiking, biking, birdwatching, and fishing. State forest rules and DCNR regulations regarding public usage and access should be reviewed by those planning a visit.

Moving forward, planning and development for the mountain as part of the Pinchot State Forest will bring with it improvements to allow easier access as well as new amenities. When planning a visit to Miller Mountain, please visit the DCNR website ([www.dcnr.pa.gov](http://www.dcnr.pa.gov)) for current information and updates. See the Pinchot State Forest listing on page 13.



# TRAILS



Hiking, biking, horseback riding or an easy stroll on a beautiful day are all ways to take in the beautiful scenery of the Endless Mountains. The network of trails offers thousands of recreational miles for you to discover the fun waiting for you across the four counties of Bradford, Sullivan, Susquehanna and Wyoming all four seasons of the year!

*As we witness expansion of our trail system, EMHR advises visitors to check the websites mentioned for the trails listed when planning a visit. In addition to seasonal condition updates, information on trail length, terrain and other considerations can be found there.*

## RAIL-TRAILS / REGIONAL TRAILS

### D & H Rail-Trail

The 38-mile D&H Rail-Trail runs from the Simpson Viaduct at Route 171, off of Morse Avenue, north through Lanesboro to the New York State border, generally following the eastern border of Susquehanna County. Biking, hiking, running, horseback riding, snowmobiling. [neparailtrails.org](http://neparailtrails.org)

## TRAILS

### Bradford County

#### Beers Community Wetland Nature Trail

200 Lake Rd, Towanda  
[nicelocal.com](http://nicelocal.com)

#### Jim King Memorial Park

1060 Glen Valley Road, Athens  
[athenstownship.org/townParks](http://athenstownship.org/townParks)

#### Lamb's Lookout Park

500 Lamb's Park Road, Canton  
[visitbradfordcounty.com](http://visitbradfordcounty.com)

#### Larnard-Hornbrook County Park

1241 Hornbrook Road, Towanda  
[bradfordcountypa.org/county-parks](http://bradfordcountypa.org/county-parks)

#### Mt. Pisgah County Park

2181 Wilcox Drive, Troy  
[bradfordcountypa.org/county-parks](http://bradfordcountypa.org/county-parks)

#### Mt. Pisgah State Park

28 Entrance Road, Troy  
[dcnr.pa.gov](http://dcnr.pa.gov)

#### Round Top Park Recreation Area

2555 Round Top Road, Athens  
[athenstownship.org/townParks](http://athenstownship.org/townParks)

### Sullivan County

#### Eagles Mere Conservancy

Conservancy Cabin, Eagles Mere  
[eaglesmereconservancy.org](http://eaglesmereconservancy.org)

### Loyalsock State Forest

6735 Route 220, Dushore  
[dcnr.pa.gov](http://dcnr.pa.gov)

### Loyalsock Trail

Mead Road, Dushore  
[alpineclubofwilliamsport.com](http://alpineclubofwilliamsport.com)

### Mokoma Conservancy

6 Gate Road, Laporte  
[mokomaconservancy.org](http://mokomaconservancy.org)

### Ricketts Glen State Park

695 State Route 487, Benton  
[dcnr.pa.gov](http://dcnr.pa.gov)

### Summit Loop Trail

SR 42, Laporte  
[loyalsockfoundation.org](http://loyalsockfoundation.org)

### Worlds End State Park

82 Cabin Bridge Road, Forksville  
[dcnr.pa.gov](http://dcnr.pa.gov)

### Susquehanna County

#### Clifford Township Park

119 Cemetery Street, Clifford  
[cliffordtownship.org](http://cliffordtownship.org)

#### Endless Mountains Trail

Route 706 (Behind Pump n Pantry), Montrose  
[neparailtrails.org](http://neparailtrails.org)  
(More information on page 10)

#### Florence Shelly Preserve

Route 171, Thompson  
[nature.org](http://nature.org)

#### O & W Trail

Route 171, Simpson  
[neparailtrails.org](http://neparailtrails.org)  
(More information on page 10)

#### Salt Springs State Park

2305 Salt Springs Road, Montrose  
[dcnr.pa.gov](http://dcnr.pa.gov)

## Woodbourne Forest & Wildlife Preserve

8500 PA Route 29, Montrose  
elrose.org

## Wyoming County

### Camp Lackawanna

1219 Vosburg Road, Tunkhannock  
(570) 348-0643  
camplackawannafirst.com

### Davis Crossing Preserve

Erhardt Road, Overfield Twp.  
countrysideconservancy.org

### Iroquois Trail

Sunnyside Road (East End,  
behind Emergency Operation Center)  
Tunkhannock

### Keystone College

#### Woodlands Campus Trails

1 College Green, LaPlume  
keystone.edu

### Little Rocky Glen Preserve

Lithia Valley Road, Factoryville  
countrysideconservancy.org

### Peck Natural Area

Lake Road, Factoryville  
fishandboat.com

### Seneca Trail

Route 29, Eatonville

### Trolley Trail

1 College Green, LaPlume  
countrysideconservancy.org

### Vosburg Neck State Park

470 Vosburg Road, Tunkhannock  
dcnr.pa.gov/StateParks/FindAPark/  
VosburgNeckStatePark/



## BIKE ROUTES

Several state bike routes cross the region through all four counties offering beautiful scenery and a varying topography for serious cyclists. State parks and forests (see pages 4-6, pages 12-13) designate certain trails and paths exclusively for mountain biking.

### BicyclePA Route L

Runs through Susquehanna County  
Information: [trails.dcnr.pa.gov](http://trails.dcnr.pa.gov)

### BicyclePA Route Y

Runs through Bradford & Wyoming Counties  
Information: [trails.dcnr.pa.gov](http://trails.dcnr.pa.gov)

Scenic rest stops in the region offer cyclists a chance to take in some of the area's unique and panoramic scenery.

Here is a list of suggestions:

- **Wyalusing Rocks**, Route 6, Bradford County
- **Marie Antoinette Overlook**, Route 6, Bradford County
- **Nicholson Viaduct Overlook** (Visitors Pull Off), Route 11, Wyoming County
- **Forksville Covered Bridge**, Sullivan County

### Endless Mountains

#### Gravel Bikepacking Loop (EMGBL)

The new Endless Mountains Gravel Bikepacking Loop (EMGBL) takes gravel cyclists hundreds of miles through the four scenic counties of Bradford, Sullivan, Susquehanna, and Wyoming, with some unforgettable stops along the way. This mixed surface route is primarily gravel and dirt roads, but also incorporates some paved riding to ensure cyclists see our beautiful towns and business districts. Boasting 42,000 feet in elevation changes throughout the approximate 430 miles, the loop can be experienced in increments over time or as a multi-day (or multi-week) trip for those wanting to experience the entire loop. See feature article on page 27 for more information.  
[emheritage.org/endless-mountains-gravel-bikepacking-loop/](http://emheritage.org/endless-mountains-gravel-bikepacking-loop/)



# TRAILS

## CROSS COUNTRY SKIING/SNOWSHOEING

Designated cross country ski and snowshoe trails in state parks and forests are open through the season based on weather conditions. Refer to the State Park, Forest and Trails Sections on Pages 4-6, 12-13 for the complete list.

In Union Dale, ski and snowshoe rentals are offered at:

### Chet's Place

885 Tirzah Road, Union Dale  
(570) 679-2129  
chetsplace.com



## ATVs / DIRT BIKES

ATVs are not permitted in Pennsylvania State Parks and Game Lands and permitted only in certain State Forests. Information can be found at [dcnr.pa.gov](http://dcnr.pa.gov). These sites offer ATV riding and dirt bike riding at certain times. Check the websites before visiting.

### Colley Township

Colley Township Municipal Building  
5815 Route 487, Lopez (570) 928-7456  
Riding allowed on non-state roads with permit.

### O & W Trail

Route 171, Simpson  
[neparailtrails.org](http://neparailtrails.org)

ATVs are allowed with a trail pass from Stillwater north to Poyntelle only. Vehicles must be registered, insured & obtain a trail pass from the Northern Wayne Outdoor Recreation Club.

### Round Top Park Recreation Area

2555 Round Top Road, Athens  
[athenstownship.org/townParks.php](http://athenstownship.org/townParks.php)

Certain trails open to ATV & dirt bikes, check the website.

## SNOWMOBILE TRAILS

Each winter, snowmobile trails are designated across the region.

**Loyalsock State Forest** assigns nearly 130 miles of roads and 16 miles of trails for snowmobile use. Check the park website at [dcnr.pa.gov](http://dcnr.pa.gov) for current information.

**Northeast PA Sno-Trails** is a member of the PA State Snowmobile Association. The group grooms the D&H and O&W trail systems in winter, as well as opens additional linking trails and regulates snowmobilers. [nepsnotrails.com](http://nepsnotrails.com)

**Sunfish Pond County Park** (see page 22) in Canton, Bradford County, offers trails extending into Sullivan County specifically for snowmobile riding.

### Susquehanna County Snowmobilers

**Association** grooms and maintains the Endless Mountains trail. A trail pass and insurance are necessary for snowmobiling. Courtesy and safety rules must be followed. For trail pass applications, maps, and trail conditions, see [scsa.pa.org](http://scsa.pa.org).

## HORSEBACK RIDING

Equestrians have several spots across the region to take their horses out to enjoy the scenic trails of the Endless Mountains. State parks and forests in Pennsylvania designate certain trails specific for horseback riding (See Pages 4-6, 12-13 or [dcnr.org](http://dcnr.org)).

The **D & H Rail-Trail** permits horseback riding on their well maintained 38-mile trail in Susquehanna County ([neparailtrails.org](http://neparailtrails.org)).





# CLOSE TO **EVERYTHING**, AWAY FROM IT **ALL**

Susquehanna County is *the* place in northeastern Pennsylvania to play, stay, relax, and rejuvenate.

## FIND YOUR WAY

to year-round outdoor adventure in a nature lover's paradise. Explore the rail, coal and agricultural heritage that shaped the region. Host your special gathering or corporate event at one of our unique venues. Visit the boutiques, galleries, breweries, wineries and restaurants in our friendly small towns.



**Find where to eat,  
play, stay & more!**

[visitsusqco.com](https://visitsusqco.com)   

# STATE FORESTS



**T**ourists are drawn to the state forests of the Endless Mountains where outdoor enthusiasts discover the perfect backdrop for hiking, camping, hunting, fishing, birdwatching, and enjoying the spectacular fall foliage. These state forests, managed by the DCNR's Bureau of Forestry, serve a dual purpose. Not only do they safeguard critical habitats and natural resources, but they also offer sanctuary for visitors looking to immerse themselves in nature. Open year round as a recreational resource, these public lands are a destination to explore and connect with the natural world. So, why wait? Lace up your hiking boots, grab your binoculars, and experience the beauty of the state forests of the Endless Mountains.

## LOYALSOCK STATE FOREST

**6735 Route 220, Dushore (offices)**

**Phone: (570) 946-4049**

**Website: [dcnr.pa.gov/](http://dcnr.pa.gov/StateForests/FindAForest/Loyalsock/)**

**StateForests/FindAForest/Loyalsock/**

**Email: [fd20@pa.gov](mailto:fd20@pa.gov)**

With its rugged mountain trails, scenic views, and rushing waterfalls, the Loyalsock State Forest captures the natural beauty of the wilderness. Named for the Loyalsock Creek, this public land encompasses 114,552 acres in Bradford, Sullivan, and Lycoming counties.

The Loyalsock State Forest is home to nearly 200 miles of hiking trails, including parts of the 59-mile Loyalsock Trail. Most roads and trails are also open to mountain biking and horseback riding. In the winter, visitors can explore the forest on cross-country ski trails and snowmobile routes.

For the best views, visitors can drive to High Knob Overlook, where they'll see the town of Hillsgrove and about 80% of the vast state forest land. At night, this rural, secluded spot is perfect for stargazing.

The Loyalsock Creek boasts excellent trout fishing, while Bear Wallow Pond and Sones' Pond are ideal for warmwater fish. The ponds also offer a peaceful spot for kayaking and canoeing.



For hunters, the Loyalsock State Forest is a well-known spot for black bears, as well as deer, grouse, turkey, and small game. With so much to see and do, many visitors spend the night. Roadside campsites, equestrian campsites, and primitive backpacking sites are available.

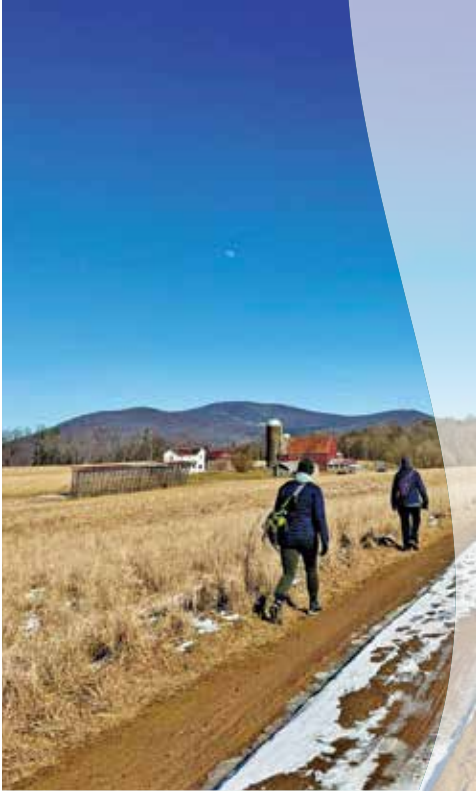
# PINCHOT STATE FOREST

1841 Abington Road,  
North Abington Township (offices)  
Phone: (570) 945-7133  
Website: [dcnr.pa.gov/  
StateForests/FindAForest/Pinchot/](http://dcnr.pa.gov/StateForests/FindAForest/Pinchot/)  
Email: [fd11@pa.gov](mailto:fd11@pa.gov)

The Pinchot State Forest honors the legacy of Gifford Pinchot, former Pennsylvania governor and first chief of the United States Forest Service. It encompasses several mountainous properties across Northeastern Pennsylvania, particularly along the Susquehanna and Lackawanna rivers. Combined, the individual tracts total about 50,000 acres.

In the Endless Mountains, visitors can explore Miller Mountain, a 2,500-acre property located just south of Tunkhannock. This massive, standalone mountain stands over 2,000 feet tall with sweeping views of town and the Susquehanna River below.

Miller Mountain officially opened to the public in November 2023. Over the next few years, the Bureau of Forestry will establish a



formal trail system, designated parking lots, and other infrastructure. However, unblazed logging roads already exist on the property, which open opportunities for hiking, biking, hunting, and more. The terrain is steep and challenging, but the vistas make it well worth the effort.



# WATERWAYS & WATERFALLS



**P**addling in a canoe or kayak, casting off with hopes of catching “the big one,” or taking the plunge into some cool, clean water on a summer day - the lakes, rivers, streams, and creeks of the Endless Mountains have a perfect recreational spot waiting for you! Our waterfalls are some of the best in the world – make sure you add some time to enjoy them.

## WATER TRAILS

### Susquehanna River Branch Water Trail

The Endless Mountains Heritage Region proudly serves as the official Water Trail Management organization for the upper Susquehanna River Branch Water Trail. The North Branch has been designated as a National Recreation Trail of the National Park Service since 2009 and is also part of the Pennsylvania Water Trail System coordinated by the Pennsylvania Fish & Boat Commission. This recreational trail offers kayakers, canoers, and paddlers some of the most scenic waters in the mid-Atlantic to discover and explore. The Susquehanna Branch Water Trail was named the “2023 PA River of the Year” and has been designated “PA River of the Year” for a sixth time, more than any other water trail in the state. [emheritage.org](#)

**Creekside Park**, Wyalusing, is an access spot to the Susquehanna River, specifically designed for kayaks, canoes, and fishermen. The 9-acre property in the borough also offers greenspace, recreational resources, and facilities for those looking for a starting spot to enjoy a North Branch Water Trail outing.

## RIVERS & CREEKS

### Susquehanna River

From the tributaries in New York state to the Chesapeake watershed into which it empties, the mighty Susquehanna River has a rich history as a recreational and commercial artery linking towns and regions across the mid-Atlantic. Meandering through Susquehanna, Bradford, and Wyoming Counties, thanks to the efforts of conservationists and ecologists, visitors will discover almost 100 miles of clean, clear water for recreation. Boating, kayaking, canoeing, fishing, and tubing are some of the activities that visitors will enjoy along this beautiful waterway.



### Chemung River

Tributary of the Susquehanna River where it crosses into Pennsylvania from New York State, visitors will discover a boat launch and recreational resources near Sayre.

### Bowman Creek

This 26-mile creek running along State Route 29 starts near Ricketts Glen State Park and flows to the Susquehanna River. It is highlighted by natural pools and easy rapids.

### Lower Mehoopany Creek

The 6-mile course of this creek running from Forkston to Mehoopany offers easier rapids for navigation as it winds through this stretch of Wyoming County.

### Loyalsock Creek

A trout fishing fan's dream come true! Meandering along 64 miles of scenic wilderness, this popular creek was named 2018's Pennsylvania River of the Year in honor of the wide variety of recreational activities visitors will discover. From the swimming area at Worlds End State Park to the rocky streambed filled with freshwater fish besides trout, Loyalsock Creek is a “must visit” for outdoor enthusiasts in Northeastern Pennsylvania!

### Mehoopany Creek

Scenic spot in Wyoming County highlighted by numerous rapids along a 6-mile stretch from Stony Brook to Forkston.

### Meshoppen Creek

This challenging 30-mile creek runs from Bridgewater Township to Meshoppen surrounded by a scenic course of lush foliage.

### South Branch Tunkhannock Creek

22 miles long, from Scott Township to Bardwell, a portion near Keystone College in LaPlume is part of the Keystone Select Stocked Trout Waters program. One of the region's most popular whitewater runs due to the rapids it offers.

### Tunkhannock Creek

The 42-mile Tunkhannock Creek, a tributary of the Susquehanna River, runs along Route 29 through parts of Wyoming and Susquehanna counties.

### Upper Mehoopany Creek

This Wyoming County creek is one of the Endless Mountains' best whitewater runs featuring challenging rapids and waterfalls. Recommended for experienced paddlers.

## LAKES & PONDS

### Bradford County

#### Bayards Pond

Reservoir located just 7 miles from Athens, that plays home to a wide variety of fish along Pennsylvania's northern tier.

#### Claverack Pond

Reservoir near the Susquehanna River and Route 6; easy access.

#### Cooks Pond

The pond in Orwell Township is naturally spring fed and boasts a high quantity of perch, pike, bass, bullheads, and crappies.

#### Lake Wesauking

Located approximately four miles from Towanda, this picturesque fishing area is a favorite in season as a scenic spot to cast off on a beautiful day.

#### Shores Pond

Near Wysox, this 17-acre pond is a favorite of local fisherman. Easily accessible right off PA Route 6.

#### Stephen Foster Lake

Beautiful 70-acre lake in Mt. Pisgah State Park. Lake is known for stock of bass and panfish; offering numerous recreational opportunities.

#### Sunfish Pond

Located in Leroy Township atop Barclay Mountain in the middle of the woods. The 30-acre pond is filled with trout and other fish.



### Sullivan County

#### Bearwallow Pond

23-acre pond offering beautiful scenery and a peaceful setting for a day on the water.

#### Eagles Mere Lake

A private lake that is not open to the public, those looking for an outdoor getaway can seek access through lodging partners and vacation rentals offered by realtors in the region who work in agreement with the lake association.

#### Hunters Lake

This freshwater lake in Shrewsbury is an 117-acre impoundment. The property, which includes approximately 2,000 acres of surrounding woodlands, allows only electric and non-electric engines on craft.

#### Lake Jean

Part of Ricketts Glen State Park, Lake Jean offers a wide variety of activities from boating and kayaking to fishing to swimming. Boat rentals are available in season and the beach front and pavilion offer other recreational opportunities for visitors at this pristine, fresh mountain water lake.

#### Shumans Lake

Sixty-acre lake in State Game Lands 66, not far from Lopeze.

#### Sones Pond

Sitting in the heart of the Loyalsock Forest, this fishing area offers restrooms, picnic facilities, and a public boat access.

#### Splashdam Pond

55-acre pond in Colley Township, regarded as an excellent spot for bird watching and fishing.

### Susquehanna County

#### Fiddle Lake / Fiddle Lake Creek

Private lake whose creek is a tributary of the West Branch of the Lackawanna River running through Susquehanna County. The creek runs approximately 6 miles flowing through Ararat Township, Herrick Township, and Union Dale.

# WATERWAYS & WATERFALLS

## Susquehanna County (Continued)

### Forest Lake

Reservoir located just 5.7 miles from Montrose, where fishing enthusiasts will find a variety of fish including perch, rainbow trout, bream/bluegill and largemouth bass.

### Heart Lake

Lake near Montrose also known as "Hart Lake". Fishing during season with current Pennsylvania license.

### Laurel Lake

45-acre lake along SR 4002 that offers fishing and boating among other seasonal activities.

### Lake Montrose

Reservoir outside Montrose where pickerel, large and small mouthed bass and other local varieties can be found. Scenic spot to spend a day in the mountains casting off.

### Quaker Lake

This 122-acre lake near Brackney is a favorite spot for anglers looking to catch a variety of fish including Rainbow Trout.

## Wyoming County

### Lake Carey

The land surrounding this 182-acre lake is privately owned but this natural lake near Tunkhannock is accessible to the public for recreational use.

## Boat Launches/Permits

Permits are required for boats in Pennsylvania whether for fishing or recreational paddling. The Resources page (page 32) lists all the websites where a boater can read the rules as well as apply for temporary and permanent permits. Local outfitters can also assist with purchasing stickers.

These resources also offer the updated launch sites for the county you are visiting. Remember, violators of the rules can face fines.

In Sullivan County, Launch Permits may be purchased in the Sullivan County Treasurer's Office located at 245 Muncy Street, Laporte.



### Lake Winola

185-acre lake composed of an eastern and western basin, separated by a peninsula entering the lake from north to south. A public boat launch is located along the southeast corner of the lake. Motorized boats are permitted on the lake but are required to navigate counterclockwise.

### Oxbow Lake

Boats are not permitted on this 60-acre lake near Lemon. Fishing is permitted from the shore only.



## WATERFALLS

The waterfalls across the four counties of the Endless Mountains – one of the state's most photographed outdoor attractions - draw visitors to the region from far and wide. Experience the splendor of these natural wonders that you will discover along byways, waterways, trails and in parks and forests. From leisurely stroller to serious hiker, the waterfalls of the region are a treasure waiting to be enjoyed by all!

## Bradford County

### Falls Creek Trail

A series of waterfalls located along Falls Creek in State Game Lands 12, Franklin Township.

## Sullivan County

### Double Run Falls

Located along the two-mile Double Run Nature Trail in Forksville.

## Loyalsock State Forest

### Big Run Falls

A trio of roadside waterfalls, easily accessible from Sullivan Falls Road.

### Dry Run Falls

Close to parking and picnic areas, this 20-foot, two-streamed waterfall is easily accessible for visitors to enjoy.

### Dutchman Falls

A short hike along the Loyalsock Trail leads to this two-tier waterfall that naturally forms on the Loyalsock Creek.

### Mineral Spring and Neeneha Falls

Discover a colorful natural spring and beautiful waterfall on a 3-mile hike along the Double Run, Link, and the new East Branch trails of Worlds End State Park.

### Ricketts Glen State Park (Falls Trail)

The Glens Natural Area along the Falls Trail features 21 waterfalls with the tallest at 94 feet. The entire trail system is 7.2 miles long, but hikers can see most of the falls on a 3.2-mile loop. Parking is available at the lots on PA-118, Beach Lot #2, and the Lake Rose trailhead.

### Sullivan Falls

One of the largest roadside waterfalls in the county, located on State Game Lands 13.

## Susquehanna County

### Salt Springs State Park

The trail running through the old growth forest along the 34 acre Fall Brook Natural Area is easily accessible and ideal for leisurely paced access to the falls.



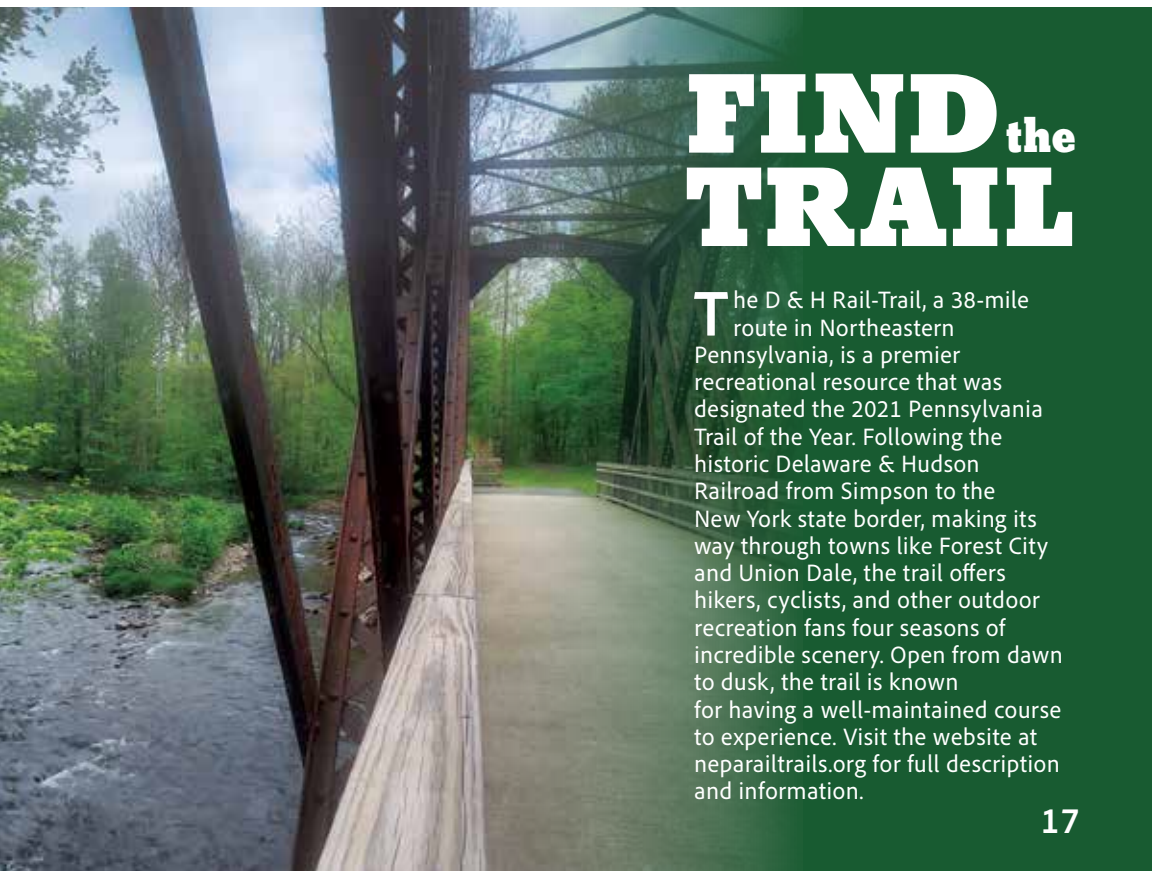
## Wyoming County

### Buttermilk Falls

Located near the road along PA Route 92 and Falls Road. Note: Parking may be difficult at the site; best view of the falls is from a boat in the Susquehanna River.

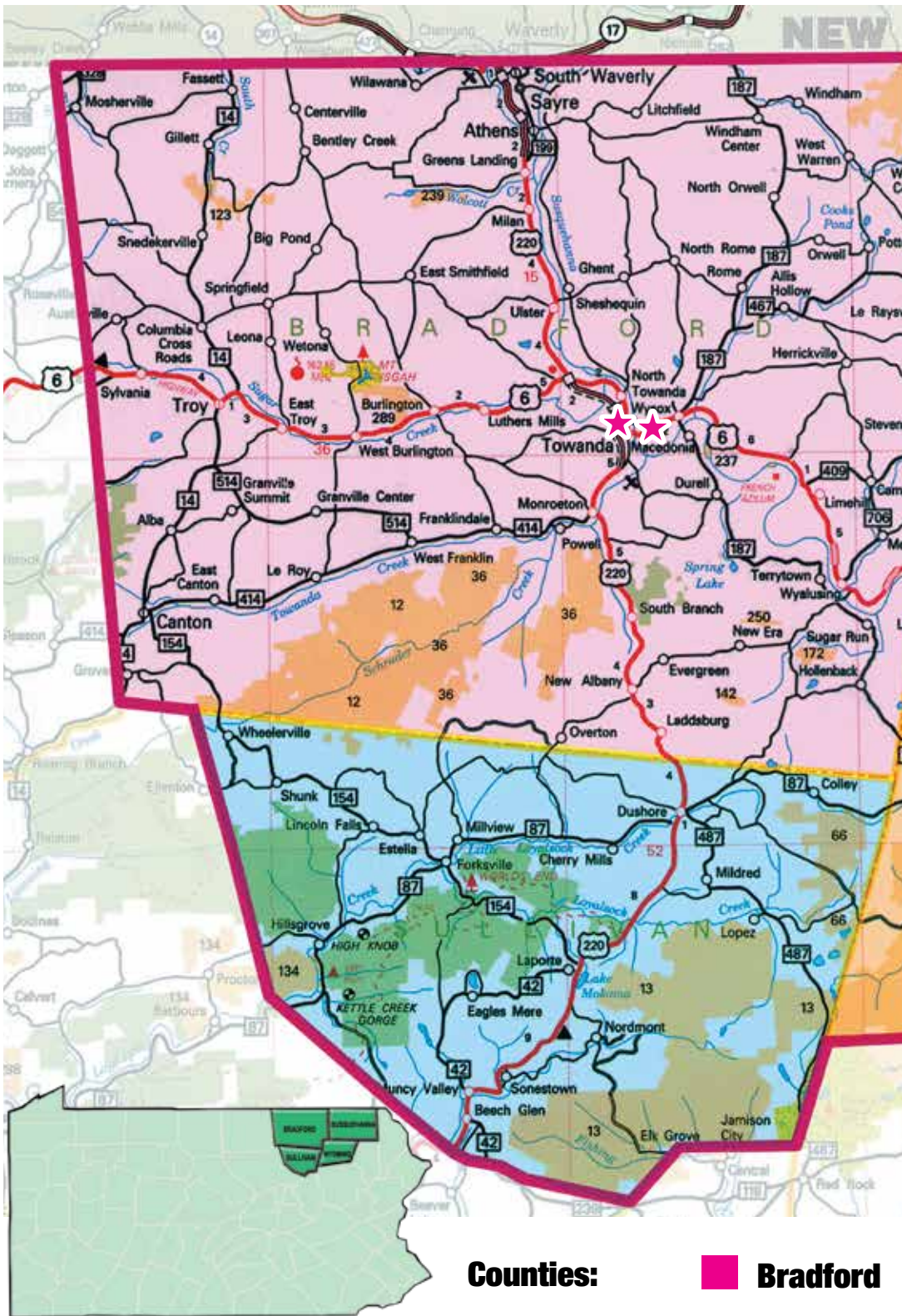
### Mythical Falls/Koerber Falls

Natural falls located in State Game Lands 57, Forkston Township along Mehoopany Creek.

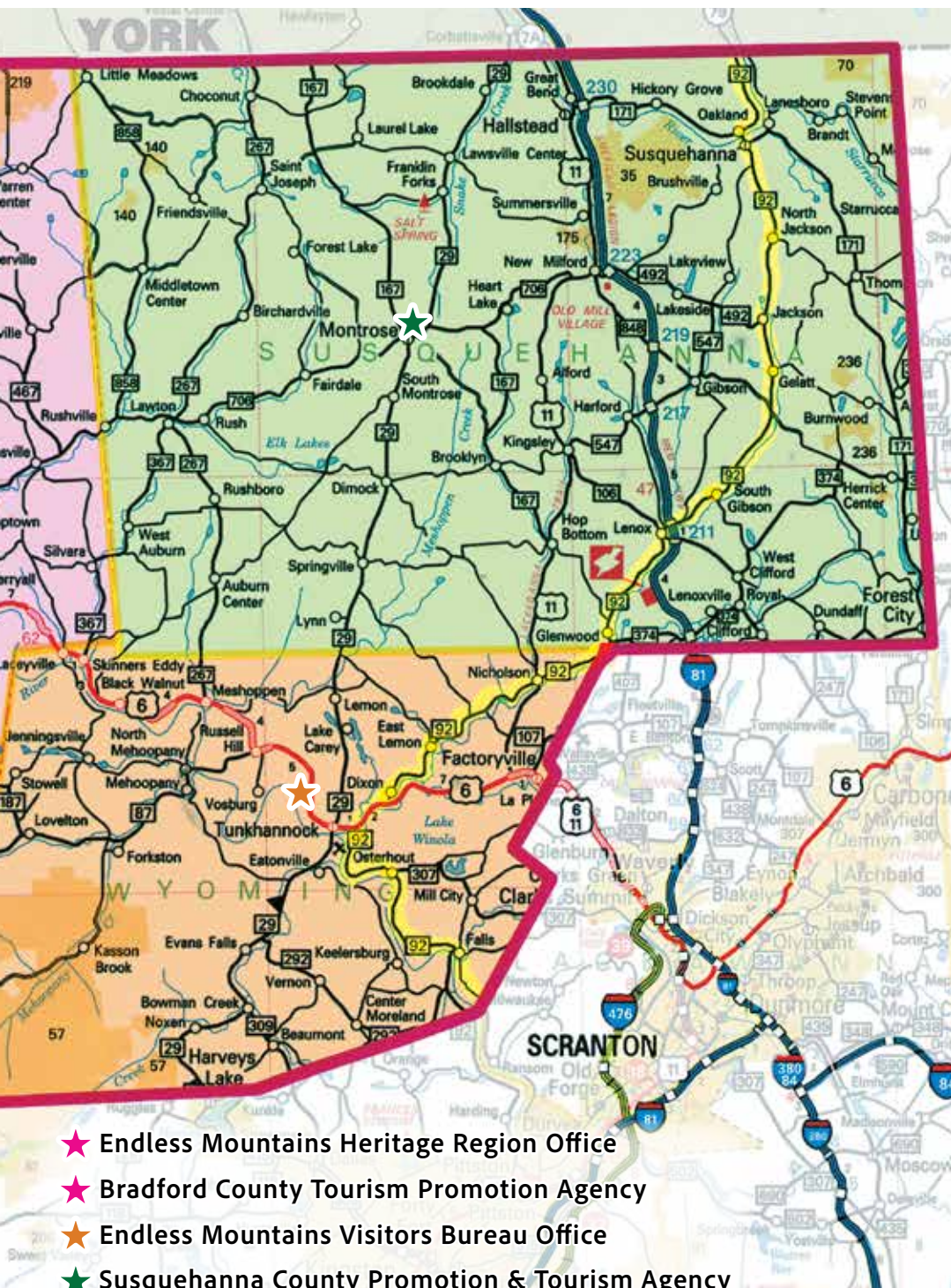


# FIND<sup>the</sup> TRAIL

**T**he D & H Rail-Trail, a 38-mile route in Northeastern Pennsylvania, is a premier recreational resource that was designated the 2021 Pennsylvania Trail of the Year. Following the historic Delaware & Hudson Railroad from Simpson to the New York state border, making its way through towns like Forest City and Union Dale, the trail offers hikers, cyclists, and other outdoor recreation fans four seasons of incredible scenery. Open from dawn to dusk, the trail is known for having a well-maintained course to experience. Visit the website at [neparailtrails.org](http://neparailtrails.org) for full description and information.



Counties:  **Bradford**



■ **Sullivan**
■ **Susquehanna**
■ **Wyoming**

# STATE GAME LANDS



State Game Lands throughout the region under the management of the Pennsylvania Game Commission not only offer hunters thousands of miles of prime land to pursue their sport but during off-season offer recreationalists like hikers, bikers, horseback riders, and other visitors prime untouched wilderness to enjoy throughout the year.

Game Land #	Town/Area	Acreage	Coordinates
<b>Bradford County</b>			
12	Shunk	24,480 acres	41°37'18"N 76°42'47"W
36	Monroeton	18,971 acres	41°39'17"N 76°35'4"W
123	Bentley Creek	1,615 acres	41°54'51"N 76°46'32"W
142	Colley	369 acres	41°35'45"N 76°21'31"W
172	Colley	722 acres	41°37'22"N 76°17'11"W
219	Windham	5,619 acres	41°58'5"N 76°11'52"W
237	Wyalusing	161 acres	41°42'33"N 76°19'25"W
239	Sayre	842 acres	41°54'41"N 76°36'41"W
240	Monroeton	740 acres	41°39'48"N 76°25'23"W
250	Wyalusing	444 acres	41°38'47"N 76°19'47"W
289	East Troy	1,552 acres	41°47'2"N 76°39'32"W
<b>Sullivan County</b>			
12	Shunk	24,480 acres	41°37'18"N 76°42'47"W
13	Sonestown	49,528 acres	41°22'0"N 76°22'30"W
66	Lopez	8,107 acres	41°28'33"N 76°16'54"W
134*	Barbours	8,375 acres	41°25'0"N 76°46'24"W
*(Sullivan & Lycoming Counties)			
<b>Susquehanna County</b>			
35	Great Bend	7,772 acres	41°55'53"N 75°41'19"W
70*	Starrucca	6,363 acres	41°58'9"N 75°28'45"W
*(Susquehanna & Wayne Counties)			
140	Friendsville	1,347 acres	41°56'15"N 76°5'2"W
175	Great Bend	736 acres	41°53'19"N 75°44'42"W
236	Thompson	2,010 acres	41°46'11"N 75°31'22"W
<b>Wyoming County</b>			
57*	Lopez	45,986 acres	41°25'9"N 76°9'6"W
*(Wyoming & Luzerne Counties)			
66	Lopez	8,107 acres	41°28'33"N 76°16'54"



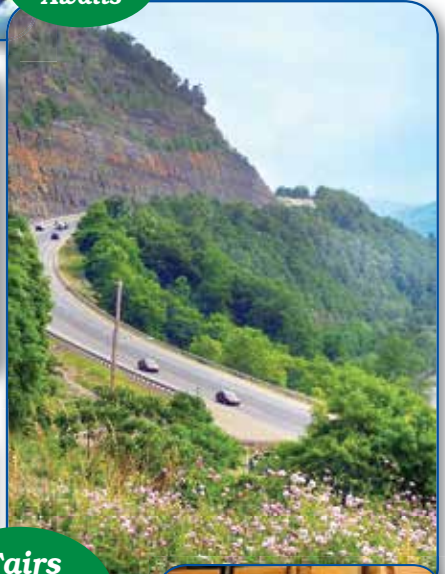
Visitors and Recreational Users (hiking, biking, ATV) are advised to do their research and learn the best times to visit based on their interests, and if heading out during one of Pennsylvania’s gun or bow seasons to follow all guidelines as set down by the Game Commission to ensure their safety.

We invite everyone from everywhere to come  
***“Experience Bradford County!”***



**Adventure  
Awaits**

**History  
& Heritage**



**Fairs  
&  
Festivals**

**Postcard-  
Like  
Streets**



**Kayaking  
&  
Hiking**



ENDLESS OPPORTUNITIES  
**BRADFORD COUNTY, PA**

Bradford County Tourism Promotion Agency | 1 Washington Street, Suite B, Towanda, PA 16848



[www.visitbradfordcounty.com](http://www.visitbradfordcounty.com) • 570.265.TOUR Follow us on 

# LOCAL PARKS & RECREATION



Enjoying some outdoor time with friends and family doesn't always mean a trek into the forest. Some of the best times you can experience or local playgrounds, parks, courts and fields. The local recreational areas listed below offer some ideas for a great day out in the Endless Mountains – from a family picnic to picking up a paddle and playing some pickleball or tennis. The amenities across the four counties offer a wide variety of resources for some outdoor fun!

**Vistas & Decks to Take in the View** – across the Endless Mountains, there are several natural locations to stop and enjoy the view: Bradford County's Mt. Pisgah County Park and Roundtop Park, the Marie Antoinette Overlook on Route 6; Sullivan Counties High Knob at World's End State Park; Susquehanna County's Elk Mountain (lift rides during Fall Festival); and Wyoming County's Miller Mountain are a few to consider. Visit the individual visitor bureau websites for details.

## COUNTY PARKS & RECREATIONAL RESOURCES

### Bradford County

#### Alparon Community Park

436 Gate 1 Lane, Troy  
alparonpark.com  
Event space with bathrooms, campgrounds, facilities; fields & other event features.

#### Asylum Township Park

975 Old Mill Park Road, Towanda  
susquehannagreenway.org/parks-5  
Historic site offering river access, parking, restrooms, and picnic facilities.

#### Cooks Pond County Park

136 Cooks Pond Lane, Rome  
bradfordcountypa.org/county-parks/  
Freshwater fishery with boat launch & parking.

#### French Azilum Historic Site

469 Queens Road, Towanda  
thefrenchazilum.com  
Historic site, museum and grounds along Susquehanna River.

#### Jim King Memorial Park

1060 Glen Valley Road, Athens  
athenstownship.org/townParks  
Baseball, basketball, volleyball areas, pavilion, walking trails and playground.

#### Lambs Lookout Park

500 Lambs Park Road, Canton  
visitbradfordcounty.com  
Scenic vista with trails as well as picnic and parking area.

### Larnard-Hornbrook County Park

1241 Hornbrook Road, Towanda  
bradfordcountypa.org/county-parks  
Camping, recreational fields, pavilions and trails along the Susquehanna River.

#### Mt. Pisgah County Park

2181 Wilcox Drive, Troy  
bradfordcountypa.org/county-parks  
Hiking trails, pavilions, primitive camping, rest facilities and scenic vistas.

#### Round Top Park Recreation Area

2555 Round Top Road, Athens  
athenstownship.org/townParks  
Fishing, hunting, hiking, off road trail, sledding, playground and pavilion.

#### Sunfish Pond County Park

1060 Sunfish Pond Road, Canton  
visitbradfordcounty.com  
Fishing, boat launch (electric motor), camping, snowmobile trail (seasonal), pavilion and park.

#### Wysox Township Park

Route 187, Wysox (at Riverfront Park)  
wysoxtownship.org  
Public boat launch and river access, fishing, restrooms, pavilion/picnic area.

### Sullivan County

#### Cosgrove Memorial Community Park

Cherry Street, Laporte  
Playground and winter ice rink.

#### Dushore Park

114 N. German Street, Dushore  
dushorepa.gov  
Recreational fields, baseball, tennis and more in the heart of town.

#### Forksville Borough Community Park

Main Street, Forksville  
Outdoor recreational area with basketball court, soccer field and pavilion.

### Susquehanna County

#### Blue Ridge Park

Church Street, New Milford  
Walking track, ballfields, basketball court, playground, pool, and pavilion.

### **Clifford Township Park**

119 Cemetery Street, Clifford  
[cliffordtownship.org](http://cliffordtownship.org)  
Walking trail through park and woods, playground, fields, children's garden and historic site.

### **Frank J. Reddon Park**

Prospect Street, Susquehanna  
[susquehannaborough.com](http://susquehannaborough.com)  
Community park with sports fields and fitness course.

### **Herrick Township Community Park**

State Route 374, Herrick Center  
Outdoor recreation and fields with children's play area.

### **Ira Reynolds Riverfront Park**

132 Exchange Street, Susquehanna  
Walking track, pavilion, model train display.

### **Kennedy Park**

Dundaff Street, Forest City  
Outdoor sports fields and courts, pavilion, pond and children's play area.

### **Lucianna Park**

Depot Street, Susquehanna  
[lanesboropa.com/viaduct.html](http://lanesboropa.com/viaduct.html)  
Recreational park at the site of the historic Starucca Viaduct.

### **Montrose Memorial Park**

Jackson Street, Montrose  
Walking track, pickleball courts, pavilion and playground.

## **Wyoming County**

### **Christy Mathewson Park**

18-19, Thompson Road, Factoryville  
[factoryville.org/community/christy-mathewson-park](http://factoryville.org/community/christy-mathewson-park)  
Baseball field, basketball courts, walking trail and pavilion.

### **Creek Junction Park**

SR 87 & Windy Valley Road, Forkston  
Playground, picnic pavilion, and baseball fields.

### **Creekside Park**

166-178 Creek Road, Factoryville  
[factoryville.org/community/municipal-park-project](http://factoryville.org/community/municipal-park-project)  
Sports fields, playground, walking paths, and dog park.

### **Donovan Park**

111 Ball Park Road, Laceyville  
Playground and sports fields along the Susquehanna River.

### **George R. Hock Memorial Park**

Church Street, West Falls  
Playground and basketball courts near the Susquehanna River.



### **Keiserville Community Center**

184 Keiserville Road Tunkhannock  
[washingtontwpwyco.org](http://washingtontwpwyco.org)  
Playground.

### **Lake Winola Community Park**

Fairview Road, Lake Winola  
Baseball field and basketball court that connects to trails at Peck Natural Area.

### **Lazybrook Park**

2 Lazybrook Road, Tunkhannock  
[tunkhannocktwp.org/lazybrook-park](http://tunkhannocktwp.org/lazybrook-park)  
Park with pavilions, playground, 18-hole disc golf course, pickleball court, creek access, and trails off historic Route 6 East.

### **Mehoopany Park & Playground**

310 Schoolhouse Hill Road, Mehoopany  
Playground and ball field.

### **Meshoppen Community Park**

Canal Street, Meshoppen  
Baseball field and playground.

### **Monroe Township Community Park**

1351 Plattsburg Road, Monroe Township  
Playground, baseball fields, walking track, basketball courts, and picnic pavilion.

### **Nordahl Park**

16 Oak Street, Nicholson  
Family friendly park for recreational activities and outdoor fun.

### **Noxen Neighborhood Community Center**

3600 SR 29, Noxen  
Playground and walking trail.

### **Riverside Park**

112b River Street, Tunkhannock  
Playground and recreational areas, boat launch on the Susquehanna River.

### **Wyoming County Seneca Park**

SR 29, Tunkhannock  
Picnic area and fishing along Bowman Creek.

# CAMPING & CAMPGROUNDS



**S**leep under the stars! From primitive spaces alongside the lulling sounds of a mountain stream, to full-service hook-ups with the amenities your blinged out RV requires, campgrounds and parks across the Endless Mountains offer it all to set up camp for your visit. No matter your personal style, sites across the four counties have the perfect spot waiting for you! Book ahead, pitch your tent, then hit the trail to enjoy time connecting with the great outdoors.

## STATE PARKS & FORESTS

The Pennsylvania State Park System operates state managed campsites and cabins at the major parks and recreation regions in the Endless Mountains. Refer to the State Park list on Pages 4-6 for contact information for these sites.

Reservations can be made online through the DCNR website at [pennsylvaniastateparks.reserveamerica.com/welcome.do](http://pennsylvaniastateparks.reserveamerica.com/welcome.do) or by calling toll-free 888-PA-PARKS (888-727-2757), 7:00 A.M. - 5:00 P.M. Monday to Saturday.

## PRIVATE CAMPGROUNDS

### Bradford County

#### Alparon Park

436 Gate 1 Lane, Troy  
(570) 297-3648  
[alparonpark.com](http://alparonpark.com)

#### Alpine Meadow Lakes Campground

256 Lake Road, Stevensville  
(570) 746-3742  
[alpinemeadowlakescampground.com](http://alpinemeadowlakescampground.com)

#### Armenia Mountain Campground

829 Mountain Avenue, Troy  
(570) 297-3149

#### Camping at Grovedale Winery

71 Grovedale Lane, Wyalusing  
(570) 746-1400  
[grovedalewinery.com](http://grovedalewinery.com)

#### Pine Cradle Lake Campground

220 Shoemaker Road, Ulster  
(570) 247-2424  
[pclake.com](http://pclake.com)

#### Riverside Acres Campground

976 Echo Beach Road, Towanda  
(570) 265-3235  
[riversideacres.com/index.html](http://riversideacres.com/index.html)

### Rolling River Cabins & Campground

1200 Leisure Drive, Towanda  
(607) 426-2666

### Sullivan County

#### Almost Heaven Campground

206 Sock View Road, Forksville  
(570) 924-3458

#### Elk Creek Escape

47 Covered Bridge Road, Hillsgrove  
(570) 250-7770  
[elkcreekescape.com](http://elkcreekescape.com)

#### Falling Waters Campground

11364 Ellenton Mountain Road, Shunk  
(570) 924-3427  
[fallingwaterscampground.com](http://fallingwaterscampground.com)

#### Pioneer Campground

307 Pioneer Trail, Muncy Valley  
(570) 946-9971  
[pioneer campground.com](http://pioneer campground.com)

#### Rocky Valley Campground

7482 Route 87 # 1, Dushore  
(570) 924-3549





## Susquehanna County

### The Camp at East Lake

3033 East Lake Road, New Milford  
(570) 465-2267  
campingateastlake.com

### Montrose Campground

403 Pratt Road, New Milford  
(570) 278-9999  
facebook.com/people/Montrose-Campground

### Rock Mountain Bible Camp & Family Campground

1156 Rock Mountain Drive, Susquehanna  
(570) 756-2200 / (800) 458-8260  
rockmountainbiblecamp.org

### Shady Rest Campground

2684 SR 2067, Union Dale  
(570) 222-2365  
shadyrestcampgroundpa.com

### Shore Forest Campground

121 The Driveway, Hop Bottom  
(570) 289-4666  
shoreforestcampground.com

## Wyoming County

### Camp Lackawanna

1219 Vosburgh Road, Tunkhannock  
(570) 836-3444  
camplackawanna.org

### Endless Mountain Campground

255 Catfish Lane, Laceyville  
(570) 869-2580  
endlessmountaincampground.com

### Highland Campgrounds

105 Whispering Winds Lane, Dalton  
(570) 586-0145  
highlandcampgrounds.com

### Rustic Creek Family Campground

30 Vacation Lane, Tunkhannock  
(570) 836-4122  
rusticcreekfamilycampground.com

### Slumber Valley Campground

248 Meshoppen Creek Road, Meshoppen  
(570) 833-5208  
slumbervalley.com

### Stony Mountain Family Campground

644 Stony Mountain Road, Tunkhannock  
(570) 836-1997  
stonymtccampground.com

### Susquehanna Shores Campground

121 Susquehanna Beach Road, Falls  
(570) 388-6921  
susquehannashorescg.com

# FIRST STEPS... A BEGINNER'S GUIDE TO THE GREAT OUTDOORS



**S**tep one – Getting up, getting out...one foot in front of the other. That's the way all great journeys begin. Across the Endless Mountains there are incredible resources ideal for the novice hiker, new cyclist, young angler, and first-time skier to find their way pursuing a new activity.

All four counties of the Endless Mountains are home to low pressure and comfortably paced sites to begin developing your skills. Educational programs offered by outdoor groups, educational institutions, the Pennsylvania Department of Conservation and Natural Resources (DCNR), as well as at venues like Elk Mountain Ski Resort's Ski School have developed free and nominal fee programs to educate and inspire novice adventurers.

## Bradford County

### Eastside Riverfront Park

Enjoy a scenic walking path along the Susquehanna River in the heart of Towanda as you enjoy a leisurely "at your own pace" stroll through the historic county seat of Bradford County.

### Kayaking at Mt. Pisgah State Park

Learn the leisurely art of kayaking with a rental/lessons by the guides from Endless Mountain Outfitters who will get you out on the scenic water for a relaxing day of paddling at your own pace!

## Sullivan County

### Eagles Mere Conservancy

Take a walk along the beautiful trails or register for one of the many outdoor education programs the group offers throughout the summer.

### Summit Loop Trail

Leisure walkers and first-time hikers will find an easy to navigate route in Laporte that offers a stroll through nature perfect at an easy pace. The Loyalsock Foundation's Summit Loop is a one-mile trail through the forest offers benches to rest and reflect surrounded by the beautiful woods.

## Susquehanna County

### Salt Springs State Park

The Friends of Salt Springs State Park offer programming throughout the year to offer outdoor enthusiasts' opportunities to discover new activities and to learn about the natural wonders of this beautiful park.



### D & H Rail-Trail

This popular trail is a great place for a stroll, an easy bike ride or for a fitness hike that immerses you body and soul to the timeless beauty of the region as you make your way at your own pace.

## Wyoming County

### Susquehanna River

Let the team at Susquehanna Kayak & Canoe Rentals teach you the technique to spend a leisurely day on the region's beautiful Susquehanna River! Themed tours are offered during the season including the popular wine tasting tour.

### Trails at Keystone College

The trails on Keystone Campus are a wonderful destination for an easy walk or hike on the beautiful college campus in LaPlume.

### Vosburg Neck State Park

Pennsylvania's newest state park offers easy trails and wooded areas along the Susquehanna River. Birdwatchers will delight in the migratory birds at different seasons they will see as well as the bald eagles who keep nests along the river.

The adage says the best way to get to Carnegie Hall is practice; the same holds true for learning and growing your outdoor skills! Go on, take that first step... you'll be glad you did!

# Hit *the* Loop



## Experience the Region's Premiere Adventure Bikepacking in the Endless Mountains!

**E**stablished in 2022, the Endless Mountains Gravel Bikepacking Loop (EMGBL) offers cyclists a route that spans approximately 430 miles across scenic Bradford, Sullivan, Susquehanna, and Wyoming Counties. The EMGBL boasts over 41,000 feet in elevation changes throughout the Loop. Offering cyclists a rich mix of natural, cultural, and historical experiences to enjoy along the route, the Loop blends the seasonal beauty of the region's back roads, nostalgic downtowns, and breathtaking vistas with the parks, forests, and waterways that are a favorite of visitors throughout the year.

Along the EMGBL, take time to stop at a local winery or craft brewery. Sample the region's favorite blends, learn about the area's rich history at museums and other historic sites, discover Northeast Pennsylvania's thriving agricultural community, and savor the chance to connect with natural beauty. The route allows cyclists access to state and county parks, recreational creeks and streams, as well as an opportunity to experience the incredible Susquehanna River.

The Loop was developed to allow cyclists amenities for their trip such as accessibility to lodging options like hotels, B&Bs, vacation rentals and campgrounds along the loop. Whether planning a day trip or a multi-night adventure, the region's visitor bureaus are happy to assist with trip planning suggestions to make planning your visit a breeze.

The Endless Mountain Bikepacking Loop has been developed to consider all the needs a gravel biking enthusiast might need. Designated businesses and amenities across all four counties are eager to welcome you to enjoy one of the best rides you'll discover across the MidAtlantic.



For more information visit  
[emheritage.org/endless-mountains-gravel-bikepacking-loop/](https://emheritage.org/endless-mountains-gravel-bikepacking-loop/)

# REV IT UP

## HIGH OCTANE ADVENTURE



**A**mped up adventure is a draw for some recreational activities that offer an opportunity for their inner warrior to express itself. For those looking to raise the bar, or for those seasoned fans who need a higher dose of adrenaline, following are some suggestions to let loose across the Endless Mountains.

### **Burke's Gun Shop & Indoor Shooting Range**

Target practice and weapons training.  
138 Trail Road, Meshoppen  
(570) 712-2135  
burkesgunshop.com

### **Eagles Mere Toboggan Run**

Weather permitting, this winter ice run on the lake offers the thrill of a lifetime!  
Eagles Mere Lake, Eagles Mere  
(570) 525-3244  
eaglesmeretobogganslide.com

### **Elk Mountain Ski Resort**

Highest altitude slopes in Pennsylvania;  
slalom trail and terrain park.  
344 Elk Mountain Road, Union Dale  
(570) 679-4400  
Ski Conditions: 1-800-233-4131  
elkskier.com

### **EMR Event Park**

Paintball, camping and outdoor fun for  
individuals or groups.  
577 Wolf's Lair Road, New Milford  
(570) 465-9622  
emreventpark.com

### **Outdoor Insiders**

Indoor 3-D archery, 20-yard paper range,  
onsite outdoor course.  
310 Outdoor Drive, New Milford  
(570) 782-2520  
outdoorinsiders.com

### **Rock Mountain Sporting Clays**

Clay shooting; site of the annual Pennsylvania  
Sporting Clays Championships.  
674 Leon Mitchell Road, Springville  
(570) 965-7625  
rockmountainclays.com

### **Shooters Gauntlet**

Offering firearms instruction, competitions,  
as well as group events.  
3904 Millstone Road, Monroeton  
(484) 883-9067  
shootersgauntlet.com

### **Valley to Summit - Winter Waterfall Ice Hiking**

Winter hiking for serious hikers and climbers!  
695 State Route 487, Benton  
(215) 543-6171  
valleytosummit.com



# OUTFITTERS & GUIDES



Outfitters can provide a range of benefits for people planning a trip, especially for outdoor adventures like hunting or fishing. Here are some reasons why people might choose to use an outfitter.

## Bradford County

### Endless Mountain Outfitters

Canoe and kayak rental service.  
7474 PA-187, Sugar Run  
(570) 746-9140  
emo444.com

### Rutt'N Bucks Outfitters

Gun shop, hunting equipment.  
13150 Route 187, Wyalusing  
(570) 746-1110  
ruttnbucksoutfitters.com

## Sullivan County

### Deep Green Journey

Guided backpacking trips, forest therapy walks, and outdoor retreats in Loyalsock Forest.  
695 State Route 487, Benton  
(570) 578-2311  
deepgreenjourney.com

### Valley to Summit

Offering guided winter waterfall ice hikes in Ricketts Glen State Park.  
695 State Route 487, Benton  
(215) 543-6171  
valleytosummit.com

## Susquehanna County

### EMR Event Park

Facilitates group outdoor adventure, paintball, and other activities.  
577 Wolf's Lair Road, New Milford  
(570) 465-9622  
emreventpark.com

## Wyoming County

### Al's Susquehanna Guide Service

Fishing and river guide service.  
(570) 241-2211  
alssusquehannaguideservice.com



### Susquehanna Kayak & Canoe Rentals

Equipment rentals, river trip guide services.  
119 Krafty Rd., Falls  
(570) 388-6107  
kayaktheriver.com

### T-Town Bait & Tackle

Selling fishing supplies, outdoor gear, ammo, and apparel.  
600 Hunter Hwy., Suite 1, Tunkhannock  
(570) 996-6180  
facebook.com/profile.php?id=100092999222873

## Five Reasons to Use an Outfitter When Planning an Outdoor Adventure

- 1 Expert Knowledge & Guidance:**  
Outfitters are field professionals with extensive knowledge of everything from choosing the right gear to finding the best spots.
- 2 Safety Assurance & Risk Management:**  
Outfitters prioritize your well-being and ensure that all activities are conducted.
- 3 Access to Exclusive Locations:**  
Outfitters know great spots unknown to the public offering hidden gems to make your trip unique.
- 4 Convenience & Planning:**  
Outfitters simplify planning by handling logistics like equipment needs and directing you to local lodging/dining.
- 5 Access to Specialized Equipment & Gear:**  
Outfitters can provide gear that you might not have to enhance your performance and experience.

# PRESERVES, BIRDWATCHING, & WILDLIFE SANCTUARIES



**P**art of the experience of visiting a wildlife sanctuary or preserve in the Endless Mountains is taking time to stand in awe of nature's bounty. Viewing wildflowers, natural growth waterways and marshlands, forests, and animal preserves is an exercise in mindfulness – becoming one with the beauty and serenity of time in nature. Visiting these dedicated lands and spaces, we ask that you enjoy your stay as a good guest; honoring the time you spend by being a respectful and thoughtful visitor.

## Sullivan County

### Eagles Mere Conservancy

Route 42, Eagles Mere  
[eaglesmereconservancy.org](http://eaglesmereconservancy.org)  
Owns 373 acres and 3 miles of trails. Trail access and education programs are at the Conservancy Cabin near the Eagles Mere Outlet Pond.

### Mokoma Conservancy

6 Gate Road, Laporte  
[mokomaconservancy.org](http://mokomaconservancy.org)  
Two preserves protecting the watershed and woodlands around Lake Mokoma. Includes the 243-acre Conklin Run Wilderness Area and 143-acre Ellick Run Wilderness Area.

## Susquehanna County

### Florence Shelly Preserve

Route 171, Thompson  
[nature.org](http://nature.org)  
The 357-acre Florence Shelly Preserve boasts fields, woodlands, a stream, and a glacial pond surrounded by a floating bog. Property features 2 1/2 miles of trail.

### Woodbourne Forest & Wildlife Preserve

8500 PA Route 29, Montrose  
[elrose.org](http://elrose.org)  
Protected area managed by The Nature Conservancy covering 648 acres. The preserve contains old fields, meadows, creeks, bogs, and forests that are home to a wide variety of animals.

## Wyoming County

### Davis Crossing Preserve

274 Erhardt Road, Dalton  
[countrysideconservancy.org](http://countrysideconservancy.org)  
61-acre property in Overfield Township, Wyoming County, is partly wooded and partly wetlands, featuring heavy beaver



activity. Located along Erhardt Road between Factoryville Sportsman's Club and Lake Winola.

### Vosburg Neck State Park

470 Vosburg Road, Tunkhannock  
[dcnr.pa.gov/StateParks/FindAPark/VosburgNeckStatePark/](http://dcnr.pa.gov/StateParks/FindAPark/VosburgNeckStatePark/)

The new state park encompasses the property which includes almost two miles of riparian forest along the Susquehanna River, mature conifer plantations, and other natural growth. This spot in the river has always served as a native habitat for bald eagles and is a wonderful spot to view migratory species who follow the river currents in their travel.

### Little Rocky Glen Preserve

Lithia Valley Road, Factoryville  
[countrysideconservancy.org](http://countrysideconservancy.org)  
26-acre property highlighted by a sandstone gorge on the South Branch of the Tunkhannock Creek in Clinton Township, Wyoming County. Hemlock-clad slopes rise to either side of the gorge making it a popular fishing and picnicking spot. Open to the public dawn to dusk, April to November.

# BIRDWATCHING LOCATIONS

## ACROSS THE ENDLESS MOUNTAINS

**S**easoned bird watchers will recommend two tips to those new to the hobby – get a good set of binoculars and have patience! These spots across the region have all been specifically mentioned as spots to observe native and migratory birds in the Endless Mountains:

### Bradford County

Sunfish Pond and State Game Lands 12  
Mt. Pisgah State Park

### Sullivan County

Eagles Mere and Loyalsock State Forest

### Susquehanna County

Florence Shelly Preserve  
Salt Springs State Park  
Woodbourne Forest & Wildlife Preserve



### Wyoming County

Vosburg Neck State Park

### Susquehanna River

(all locations, especially to see migratory birds who follow river currents for navigation)  
[pgc.pa.gov/Wildlife/Birding/](http://pgc.pa.gov/Wildlife/Birding/)

## *feathered* FRIENDS



**A** pair of binoculars, camera and patience are all you need to get started on one of the outdoors fastest growing pastimes – birdwatching.

Birdwatching is a marvelous way to enjoy the outdoors, and the Endless Mountains offer countless locations to observe both native and migratory species throughout the year. In addition to the forests and mountains where game birds, hawks and eagles can be discovered, water adjacent wetlands across all four counties play home to waterfowl and songbirds. According to the U.S. Fish and Wildlife Service, about 50 million Americans are avid bird watchers, many of whom are tourists who travel to different places to observe the native species of a particular region.

The variety of birds you will discover in the Endless Mountains is a large one – from robins and sparrows to brown hawks and eagles. Local organizations like the Friends of Salt Springs State Park and the Department of Conservation and Natural Resources offer educational programs throughout the year, as do local conservancies. Check out the National Audubon Society website's bird identification page: [audubon.org/birding/identifying-birds](http://audubon.org/birding/identifying-birds).

# FIND INFORMATION YOU NEED TO ENJOY YOUR VISIT



Pennsylvania's 46,000 + square miles of land offers outdoor recreation fans incredible resources to pursue the happiness of time spent in the great outdoors. The resources you will discover across the Endless Mountains – Bradford, Sullivan, Susquehanna, and Wyoming Counties – are fall under the governance of state agencies whose specific mission is to maintain, manage, and oversee the laws and regulations of the commonwealth. When planning your visit, familiarize yourself with the rules, licensing, and safety regulations these agencies oversee. It is the responsibility of the user to educate themselves as to the rules and laws.

The following state websites can answer questions that outdoor enthusiasts will want to research to make sure they are properly licensed, advised, and informed when planning an outdoor adventure in the Endless Mountains.



[PGC.PA.gov](http://PGC.PA.gov)



[FishAndBoat.com](http://FishAndBoat.com)



[DCNR.PA.gov](http://DCNR.PA.gov)

## HUNTING

**Pennsylvania Game Commission**

[pgc.pa.gov](http://pgc.pa.gov)

**Pennsylvania Game Commission**

**Seasons & Limits**

[pgc.pa.gov/HuntTrap/Law/Pages/SeasonsandBagLimits.aspx](http://pgc.pa.gov/HuntTrap/Law/Pages/SeasonsandBagLimits.aspx)

**PA Hunting & Trapping digest (online)**

<http://read.nxtbook.com/pgc/huntingtrapping/20232024/cover.html>

**Pennsylvania Hunter/Trapper Education & Safety**

[pgc.pa.gov/HuntTrap/Hunter-TrapperEducation/Pages/default.aspx](http://pgc.pa.gov/HuntTrap/Hunter-TrapperEducation/Pages/default.aspx)

**Purple Paint Law**

[pgc.pa.gov/HuntTrap/Law/Pages/Purple-Paint-Law.aspx](http://pgc.pa.gov/HuntTrap/Law/Pages/Purple-Paint-Law.aspx)

## FISHING

**Pennsylvania Fish & Boat Commission**

[fishandboat.com/Pages/default.aspx](http://fishandboat.com/Pages/default.aspx)

**Pennsylvania Fishing Licenses**

[fishandboat.com/Fishing/Buy-License/Pages/default.aspx](http://fishandboat.com/Fishing/Buy-License/Pages/default.aspx)

## BOATING

**Pennsylvania Fish & Boat Commission**

[fishandboat.com/Pages/default.aspx](http://fishandboat.com/Pages/default.aspx)

**Pennsylvania Boating Regulations**

[fishandboat.com/Boating/Regulations/Pages/default.aspx](http://fishandboat.com/Boating/Regulations/Pages/default.aspx)

**Register a Boat in Pennsylvania**

[fishandboat.com/Boating/Register-Title-Boat/Pages/default.aspx](http://fishandboat.com/Boating/Register-Title-Boat/Pages/default.aspx)

**Life Jacket Requirements**

[fishandboat.com/Boating/Basics/Equipment/Pages/Life-Jackets.aspx](http://fishandboat.com/Boating/Basics/Equipment/Pages/Life-Jackets.aspx)

## HIKING & CAMPING

**State Park Hiking Information**

[dcnr.pa.gov/Recreation/WhatToDo/Hiking/Pages/default.aspx](http://dcnr.pa.gov/Recreation/WhatToDo/Hiking/Pages/default.aspx)

**State Park Camping Information**

[dcnr.pa.gov/Recreation/WhatToDo/StayOvernight/RVandTentCampsites/Pages/default.aspx](http://dcnr.pa.gov/Recreation/WhatToDo/StayOvernight/RVandTentCampsites/Pages/default.aspx)

Local information, lodging, dining, and event information for the region is available and current for visitors at the following websites:



Bradford County  
[VisitBradfordCounty.com](http://VisitBradfordCounty.com)



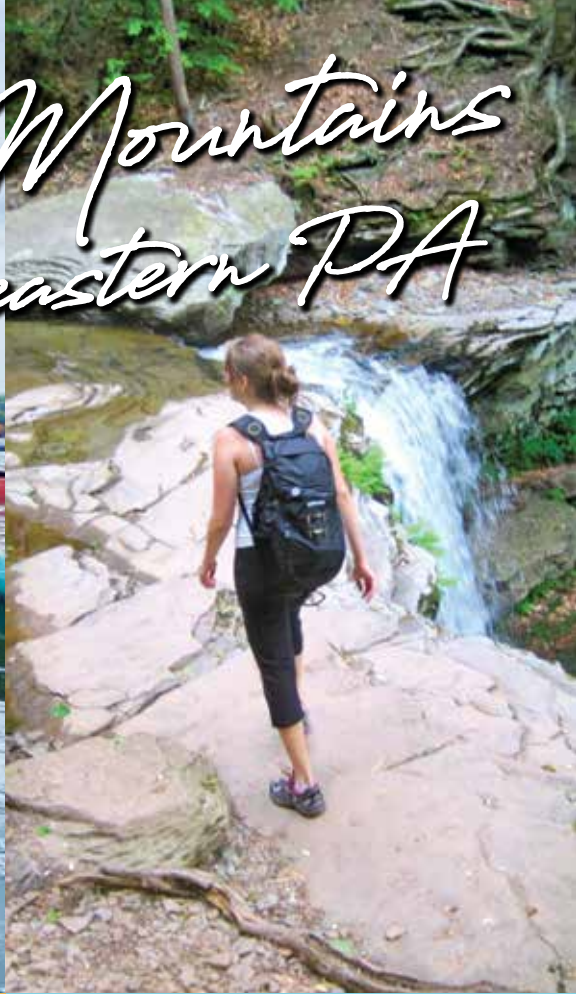
Sullivan & Wyoming Counties  
[EndlessMountains.org](http://EndlessMountains.org)



VisitSusqCo  
**SUSQUEHANNA COUNTY**  
PROMOTION & TOURISM AGENCY

Susquehanna County  
[susqco.com/departments/tourism](http://susqco.com/departments/tourism)

# Endless Mountains of Northeastern PA



**For a FREE Guide  
to the  
Endless Mountains**

**VISIT**

**EndlessMountains.org**

**CALL**

**570-836-5431**

  
**Endless Mountains**  
*Visitors Bureau*

# CARVE THE MOUNTAIN!



Offering skiers and snowboarders the highest altitude slopes in the state, Elk Mountain maintains its reputation as the best ski destination in Pennsylvania. The panoramic views you'll experience are breathtaking across the 180 acres of property that features impeccably maintained trails. Comparable to Vermont skiing "without the drive" you will delight in the fun and challenging conditions that Elk Mountain offers.

Since opening as one of the state's first professional ski areas in 1959, the resort has continually upgraded equipment and services to ensure that winter sports enthusiasts will experience a remarkable destination for their winter enjoyment.



## PHOTOGRAPHY CREDITS

### Special Thank You to:

*(Photos listed top to bottom on each page)*

**PAGE 2**  
Hunter's Lake  
Lower Alpine Vista  
Beth Jones  
State Game Lands 57  
Jason Philibotte  
Loyalsock Creek

**PAGE 4**  
Vosburg Neck  
State Park

**PAGE 5**  
Ricketts Glen  
Kevin Vogrin  
Mt. Pisgah Creek  
Paulette Kozemko

**PAGE 6**  
Salt Springs State Park  
Worlds End State Park

**PAGE 7**  
Miller Mountain  
Ben Robinson

**PAGE 9**  
D&H Rail-Trail  
Bikers Rail-Trail Council  
Iroquois Trail

**PAGE 10**  
Jackson, Susquehanna Co.  
Amanda Patterson  
Horseback Riding  
Sarah Haus

**PAGE 12**  
Loyalsock Vista Overlook

**PAGE 13**  
Miller Mountain  
William Kern  
Pinchot State Forest

**PAGE 14**  
Loyalsock Creek  
John Blough

**PAGE 15**  
Susquehanna River  
Camp Lackawanna

**PAGE 16**  
Ice Fishing

**PAGE 17**  
Ricketts Glen  
Kathleen Montella  
D&H Rail-Trail at Lanesboro

**PAGE 20**  
State Game Lands 57 (Both)  
John Blough  
Jason Philibotte

**PAGE 23**  
Mount Pisgah County Park  
Overlook  
Photo provided by  
County Park

**PAGE 24**  
Slumber Valley  
Campground

**PAGE 25**  
Elk Creek Escape  
Campground

**PAGE 26**  
Keystone College  
Trolley Trail

**PAGE 27**  
D&H Rail Trail  
Loyalsock Canyon Vista  
Bikers Downtown Canton  
Biking Overlook  
Eric Schoonover

**PAGE 28**  
Ricketts Glen  
Valley to Summit  
Ice Hiking

**PAGE 29**  
Al's Susquehanna  
Guide Service

**PAGE 30**  
Mokoma Conservancy  
Jason Philibotte

**PAGE 31**  
Bald Eagle along the  
Susquehanna River  
Deb Kintner  
Bradford County Bluebird  
David A. Simons

**PAGE 34**  
Elk Mountain Ski Resort

**Back Cover**  
*Clockwise from top left:*  
Atticus Falls  
Bob Buskirk  
Kayaking  
Winter Hiking in  
Susquehanna County  
Biking at Loyalsock

# BE PREPARED



Ask any Scout – “Be Prepared” is a wonderful motto to adhere to in life, and especially when planning to enjoy the great outdoors. The following information has been gathered for outdoor recreation fans to review and makes for an enjoyable time in the Endless Mountains.



## STAY INFORMED

Knowing recommendations set forth by the Pennsylvania Department of Health as part of your planning will keep you alert to seasonal flu and virus outbreaks, stay aware of seasonal allergy forecasts, and other data that might help with packing and preparing to enjoy your visit. You can access the current information and recommendations at the website [health.pa.gov](http://health.pa.gov) or by calling 1-877-PA-HEALTH.

## INVASIVE SPECIES AND PESKY CRITTERS

Spotted Lantern Fly and other invasive species like the Emerald Ash Borer create concerns for land management agencies in Pennsylvania. Being on the lookout for these pests and informing park staff or other officials goes a long way to help the state keep these concerning pests managed and contained.



## TICKS & TICK-BORNE ILLNESS

Deer population and other wildlife carry ticks, insects who transmit debilitating Lyme Disease. Simple precautions can help you avoid exposure.

- Treat clothing and gear with products containing 0.5% permethrin. Use Environmental Protection Agency (EPA)-registered insect repellents containing DEET, picaridin, IR3535, Oil of Lemon Eucalyptus (OLE), para-menthane-diol (PMD) or 2-undecanone.
- Check clothing, gear, and pets for ticks after going indoors. Helpful Tip: Run a lint roller over clothing after being in woods and grasses.
- Shower within 2 hours of being outdoors making sure to check your entire body for ticks and immediately remove any that you find. Tips for removing a tick can be found on the Department of Health website [health.pa.gov](http://health.pa.gov).



## WEATHER

Rapid changes to the seasonal weather patterns have become a “new normal” across the planet, the Endless Mountains being no exception. Winter squalls and sleet, summer storms, and spring rains produce damaging winds and lightning. Inform yourself and stay aware when heading out.

- Before heading out for a day of activity, check the current conditions being broadcast by local media and weather reporting agencies. Apps like The Weather Channel, The National Weather Service and the local Eyewitness News Weather Alert app that covers all four counties of the Endless Mountains offer up to the minute changes and alerts.
- Look for stone formations and safe structures along trails and byways as conditions begin changing. Do not seek shelter under a tree in a thunderstorm but opt instead for low to the ground shelters and overhangs to allow the danger to pass.
- Plan for changes in the weather when packing. Nights can grow colder in the mountains in spring and summer when conditions permit; pack a jacket or sweatshirt even in warm weather.



## KNAPSACK PACKING 101 (AND OTHER TIPS)

- Before heading out, turn on “Location Services” on your fully charged mobile device.
- Make sure your mapping & GPS software is updated.
- Be prepared by packing smartly, include: A First Aid Kit, Water or Purification Tablets, Nutritious Snacks, Map and Compass, A Multi-Tool (knife, scissors, opener, etc.), A Flashlight or Headlamp, Waterproof Matches or Lighter, Whistle, Poncho packet or Rain Gear.



This guide was funded in part by the  
PA Department of Conservation and Natural Resources





# FOUR SEASONS & A MILLION IDEAS



IT'S TIME TO DISCOVER THE ENDLESS MOUNTAINS!